



Itec Product Catalogue

MANAGED BUSINESS SERVICES



WHAT WE CAN ACHIEVE TOGETHER

A single point of contact for cost-effective, managed technology services.

Itec South Africa is a dedicated leader in business solutions, helping to solve prevailing operational and technology challenges around systems integration and the digital transformation of your business. From Print, Unified Communications, Intelligent & Cybersecurity to Document Management and Software Solutions, Itec can assist you in future-proofing your business by helping prioritise the technology solutions most suited to your requirements and budget, while managing the operational implementation of these solutions as a monthly service with flexible finance options.

Itec Managed Business Services



Communications

The message is more important than the medium, especially when we have assessed your business to give you access to all the tools of communication you need. PABX, mobile, video conferencing, data calling and connectivity, whatever works for your business to get the message across.



Cloud

We can help you to run your business applications and hardware in the cloud. Since everything in the cloud is more connected, you can securely cross-reference and share information across different applications from any device, anywhere.



Intelligent Security

We can integrate security solutions into every part of your business so that you are more prepared for disaster recovery, business continuity, more aware of your employee activities and have a solid operational awareness of your technology.



Print Solutions & MPS

We optimise your entire print environment, from daily office printing to high-volume production. Expect lower costs, automated workflows, and secure, sustainable print management that prioritises efficiency and aligns with your business goals.



Cybersecurity

Our comprehensive range of cybersecurity solutions caters to both individual users and large enterprises alike. Tailored to meet your specific requirements, we offer highly effective managed detection and response services. Leveraging cutting-edge security technologies, our solutions provide real-time threat prevention across diverse environments including networks, clouds, and data centers.



Software

Our network-ready, cloud-based software is secure and easy to integrate with customisable solutions for intelligent information and workflow management, digital filing, archiving and disaster recovery, and auditable cost management.



Finance

Our in-house finance solutions offer customers flexible, affordable and accessible finance, managed by professional consultants who help to structure any deal simply, efficiently and cost effectively.



Our single source capability, together with our innovative, flexible approach and desire to please, are the reasons that our clients entrust their business technology solutions to us.



PRODUCT CATALOGUE INDEX



1. Communications _____ pg 4

CONNECTIVITY

- iLink Connectivity
- APN Connectivity

VOICE

- VoiceGate, VoiceGate On-Prem & VoiceGate Flex
- VoiceGate Contact Centre
- Mitel SME to Enterprise
- Mitel Handsets & Base-Station
- Mitel Unified Communications
- Supporting Peripheral Solutions



2. Intelligent Security _____ pg 14

- CCTV Surveillance
- Alarm Systems & Control Rooms
- Security Software Solutions
 - Lytehouse
 - timeTec
 - Charlie
- Access Control and Time & Attendance
- Visitor Parking & Traffic Management
- Pedestrian Access Control



3. Cybersecurity _____ pg 21

- Fortinet
- Sophos



4. Cloud _____ pg 24

- Private, Public & Hybrid Business Cloud Solutions



5. Print Solutions _____ pg 26

- Printer & MFP Solutions
- Itec MPS Transform
- Itec Secure



6. Software _____ pg 28

- Software
- Print Director



7. Finance _____ pg 30

- In-House Financing Solutions



COMMUNICATIONS



The ability to stay in contact with colleagues and customers across all devices.

The message is more important than the medium, especially when we have assessed your business to give you access to all the tools of communication you need. PABX, mobile, video conferencing, data calling and connectivity, whatever works for your business to get the message across.

More Than Just a Call

We have worked with businesses of every size and complexity to find the right fit for their connectivity and communications requirements.

Whether it is enterprise PBX or SME VoIP, we use our experience to make sure everyone in your business is connected and online, no matter where they are.

The best part is that no matter whether you connect through mobile, VoIP, video call or chat, customers can reach you on a single number.

We have an expert team of technicians who will not only install your Itec connectivity solution but ensure maximum uptime in accordance with your service level agreement.

HOW IT WORKS

We will work with you to assess your connectivity and voice requirements, and use that evaluation to propose a solution that is customised and scalable, limiting unnecessary costs. We fully manage the implementation and handover of the installation, which is supported by our technical experts as a service.



**Fast, Affordable
Connectivity**



**Communication as a Service
for any Size Business**



**Secure, Collaborative Omni-
channel Communications**



**Control Spend for Better ROI
with Cloud & Hybrid Services**

CONNECTIVITY



COMMUNICATIONS

Our connectivity solutions can be customised to your unique requirements and include:

iLink Connectivity

iLINK CONNECTIVITY

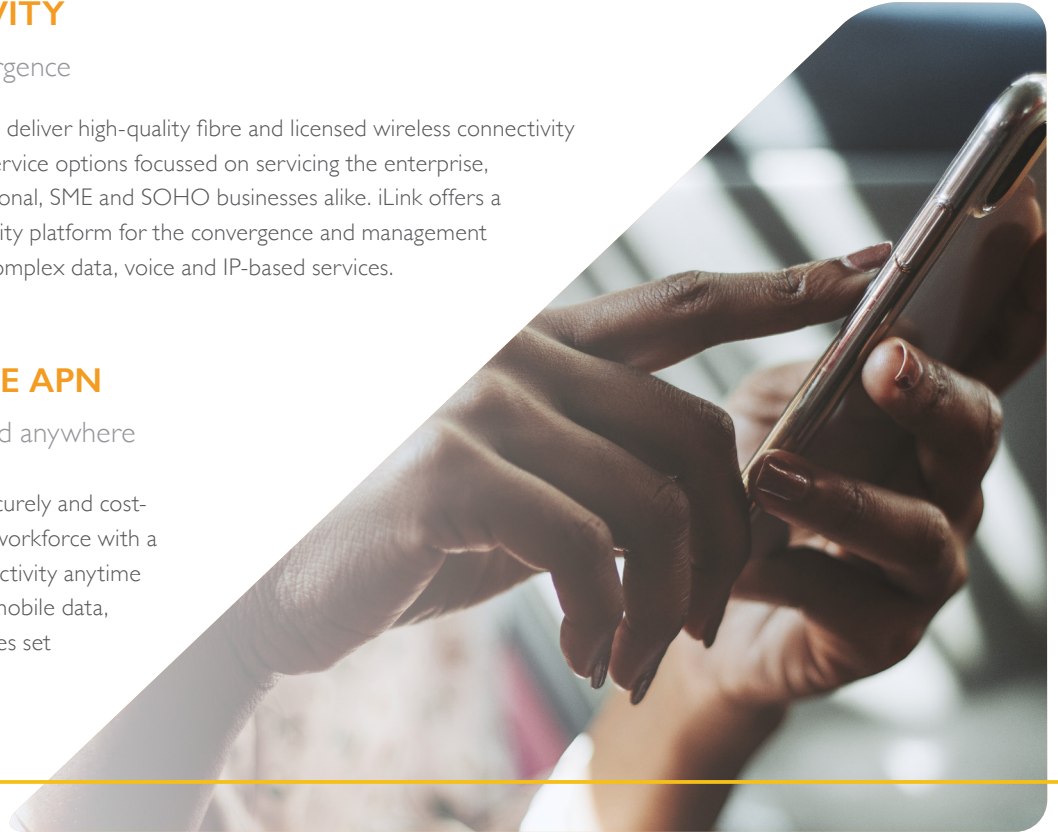
Your platform for convergence

Itec Integrate is committed to deliver high-quality fibre and licensed wireless connectivity solutions in a range of iLink service options focussed on servicing the enterprise, corporate multi-site, international, SME and SOHO businesses alike. iLink offers a reliable, high-speed connectivity platform for the convergence and management of the simplest to the most complex data, voice and IP-based services.

SHARED & PRIVATE APN

Connectivity anytime and anywhere

Ensure business continuity securely and cost-effectively by providing your workforce with a solution that allows for connectivity anytime and anywhere based on the mobile data, content allowance and confines set by your organisation.



APN CONNECTIVITY

Secure gateway for connection to the internet

APN is short for **Access Point Name**, which facilitates a secure gateway between mobile networks and other computer networks as well as the public internet. An APN solution allows for multiple SIM cards across various mobile networks (Vodacom, MTN and Telkom), connecting to the Internet via the Itec network, utilising a shared data bundle governed by a Hosted and/ Onsite Firewall that further enhances the management and security of your users and your organisation.

Itec APN Solutions consist of two options:

Shared APN

A Shared APN, allows for direct access to the internet and includes a Hosted Firewall that will allow for general limitations to be set by SIM or user.

Private APN

A Private APN allocates a unique Access Point Name (identifier), that allows mobile devices to connect to an organisation. Hosted or On-site Firewall options allow for customised rulesets and internet access routed over an existing Itec Corporate Network (MPLS).

VOICE

Designed with seamless communication in mind, Voicegate brings you a feature rich platform which offers ease of use, flexibility and scalability, advanced unified communications, and enhanced productivity at every level. Whether opting for a cloud or on-premise solution, it offers a comprehensive, all-in-one platform to meet your unique needs.



COMMUNICATIONS



MAKE THAT CALL

Itec will design a tailored telephony solution that aligns with your business size, location, and infrastructure requirements. By thoroughly assessing your communication needs, business challenges, and existing systems, we will provide a solution that best addresses all of your objectives. Whether you require a solution for a small, medium, or enterprise-level organisation, we offer both cloud and on-premise options, each accompanied by flexible financing plans to ensure we meet your budgetary needs.

Voicegate 2.0, Flex & On-Prem Options

VOICEGATE CLOUD/HOSTED

Voicegate's cloud solution offers your business all the features and functions of a traditional PBX system, without the hassle of physical infrastructure. With our cloud-based managed IP telephony system, you can unlock the full potential of PBX capabilities and enjoy seamless communication like never before.

VOICEGATE FLEX

With Voicegate Flex, we have revolutionised the way you purchase our communication solution by offering it as a month-to-month model that provides unparalleled flexibility and affordability. Say goodbye to long-term commitments and hello to a seamless Communication solution that adapts to your evolving needs.

VOICEGATE ON-PREM

Our on-premise Voicegate solution combines reliability, flexibility, and security to deliver a feature-rich IP PBX system tailored for SMBs. It enables seamless integration of voice, video, messaging, and customer experience management into a single platform, providing a unified solution for both business communication and customer engagement.



VOICEGATE 2.0

X303G Entry Level IP Phone

X4U Enterprise Level IP Phone

X210 Enterprise IP Phone

W610W Portable Wi-Fi Phone



- 4 SIP lines
- HD Audio
- 2.4" Colour Display
- 6-way Audio Conference



- Crystal-Clear Audio
- 3 Line Key with LED
- Colour Screens: 2.8" (Main), 2.4" (Side)
- 12 SIP Lines
- 30 DSS Keys



- Crystal-Clear Audio
- Colour Screen 2.4" Graphic LCD
- 20 SIP Lines
- 3x Colour screens
- 6-way audio conference
- 106DSS Keys (Perfect for Reception, no extension module required)



- Crystal-Clear Audio
- Large Capacity Battery
- Colour Screen 2.4" Graphic LCD
- Push-to-Talk (PTT) Button
- 16 DSS Keys & 4 SIP Lines
- Water, Dustproof, Drop-Safe (1.8m)
- 2.0" Colour screen
- Drop safe up to 1.8m

VOICEGATE ON-PREM

Yealink T33G

Yealink T44W

Yealink T46U & EXP43

Yealink W73P

Yealink AH83H



ENTRY

- HD Voice
- 2.4" 320 x 240-pixel colour display with backlight
- Dual-port Gigabit Ethernet
- PoE support
- Up to 4 SIP accounts
- Local 5-way conferencing
- Unified Firmware
- Support YDMP/YMCS
- Wall mountable
- Handset with hall switch



EXEC

- 2.8" 320x240-pixel color LCD with backlight
- Dual USB ports
- Up to 12 SIP accounts
- PoE support
- EHS and EXP support
- Wall mountable



OPERATOR/RECEPTION

- 4.3" color screen with backlight
- Optima HD voice with Acoustic Shield and Smart Noise Filtering
- Up to 16 SIP accounts
- PoE support
- Wall mountable
- Support USB recording
- Dual USB ports, dual-port Gigabit Ethernet
- EHS and EXP support

EXP43 Add-on Module:

- 4.3" 272 x 480-pixel color screen
- Color icons for rich visual experience
- 20x physical keys on each page
- 3x control keys with LED
- Supports up to 3 modules daisy-chain
- Stand with 2 adjustable angles



DECT BUNDLE CORDLESS

- 1.8" 128x160 TFT color screen
- Up to 20 simultaneous calls per base station
- Up to 10 DECT cordless handsets per base station
- Up to 10 SIP accounts
- DECT radio coverage
Indoors: up to 50m
Outdoors: up to 300m
- FNR (Flexible Noise Reduction)
- Up to 35-hours talk time (in ideal conditions)
- Up to 400-hour standby time (in ideal conditions)
- Headset 3.5 mm jack



WI-FI CORDLESS

- 2.4" 240 x 320 TFT color screen
- 9-hour talk, 200-hour standby
- Vibration function
- Keypad backlight
- Proximity sensor
- 3.5mm headset jack
- Wall mountable
- HD Audio Quality
- Full-duplex
- Smart Noise Filtering

Value-Add Solutions



Advance TMS:

Voicegate's Advance TMS is a powerful solution designed to centralise management, monitor live call traffic, and provide access to detailed dashboards with ease. User-friendly and secure, our Advanced TMS delivers valuable business intelligence to enhance operational efficiency, accessible anytime, anywhere.

iRecall – Compliant Call Recording:

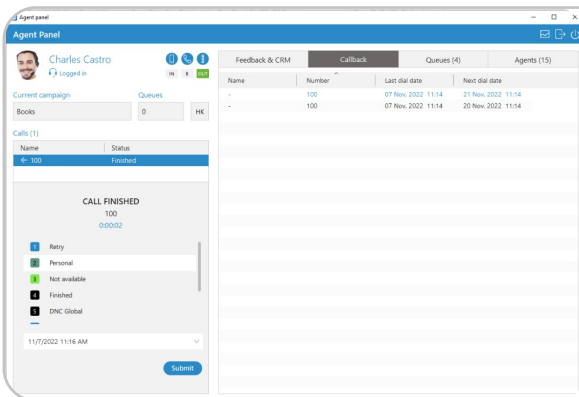
iRecall is a modern, compliant call recording solution designed to meet the needs of today's businesses. It ensures regulatory compliance, secure data access, Simplicity and affordability. Featuring robust Agent Quality Management, iRecall provides a seamless and reliable choice for all your call recording requirements.



Elevate the Customer Experience with VoiceGate Contact Centre

VOICEGATE CONTACT CENTRE

Are you operating an existing Contact Centre with multiple campaigns or planning to start one? Contact Centres vary widely in their needs. Itec understands this diversity and offers high-quality tools that are effective to enhance efficiency in small to medium professional Contact Centres. We understand that workflow structure and staff positioning are crucial for success.

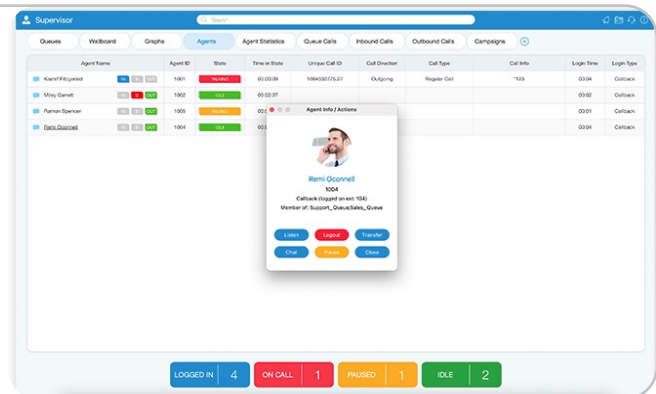


AGENT EDITION

VoiceGate's Contact Centre Agent Edition is a desktop Contact Centre Unified Communications application dedicated to boosting Contact Center Agents' day-to-day efficiency.

SUPERVISOR EDITION

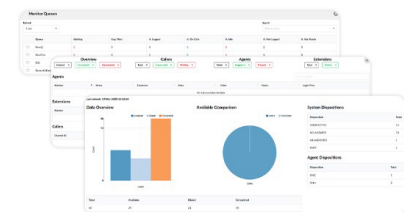
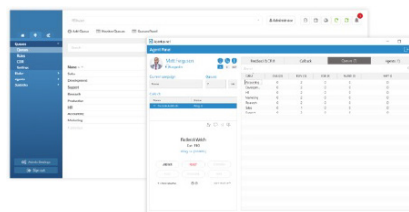
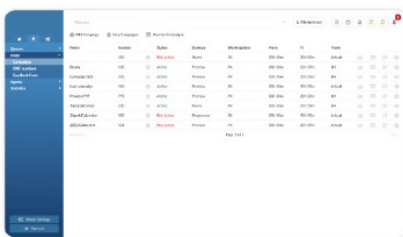
VoiceGate's Contact Centre – Supervisor edition is a desktop Contact Center Unified Communications application enabling Real Time monitoring of Agents and Queues, tracking Agents' performance and generating comprehensive Statistics Reports.



Dialer

Unlimited Queues (ACD)

Monitor Pages



This feature allows lists of data to be loaded to a database, after which an application runs and dials these numbers based on the algorithm or settings entered by the Administrator.

Automatic Call Distribution system helps keep customers on the line by routing incoming calls to the agent with the most suitable skill-set who can address the caller's needs properly.

Allows users to see a full list of all existing Campaigns on the system and access further information regarding important Real-Time data.

VOICE

Mitel SME to Enterprise

Also Available on CAPEX, OPEX & Subscription (Mitel Flex)



COMMUNICATIONS

MiVoice 6920w IP Phone



The MiVoice 6920w IP Phone is designed from the ground up for the enterprise user who requires an exceptional HD audio experience via its unique voice optimized handset. It offers a large colour LCD display, dual GigE, programmable personal keys and context-sensitive soft keys, support for both USB & Analog headsets. The wireless functionality offers WiFi 802.11 a/b/g/n, enables hotdesking, and has a MiNet / SIP operation mode.

MiVoice 6930w IP Phone



The MiVoice 6930w IP Phone commands the desktop with its large 4.3" colour display, powerful crystal clear HD audio through the voice optimised handset, programmable personal keys, Bluetooth 4.1 with Mobile Integration, mobile phone USB charging point and choice of expansion modules. The wireless functionality offers WiFi 802.11 a/b/g/n, enables hotdesking, and has a MiNet / SIP operation mode.

MiVoice 6940w IP Phone



The MiVoice 6940w IP Phone offers a large 7" touch display, powerful crystal clear HD audio through a unique cordless Bluetooth voice optimised handset and programmable personal keys. Mobile Integration, Dual Gigabit Ethernet ports and the full-duplex speakerphone ensures a robust, productivity-enhancing executive desktop communication tool. The wireless functionality offers WiFi 802.11 a/b/g/n, enables hotdesking, and has a MiNet / SIP operation mode.

MiVoice 6905 IP Phone



- 2.75" Non-Backlit Display
- 3x Programmable Keys
- 4-Way Navigation Key
- HD Wideband Audio
- Dual Ethernet 10/100 Ports
- PoE Class 1
- Hotdesking
- MiNet / SIP Operation Mode
- Headset Support

MiVoice 6910 IP Phone



- 3.4" LCD Backlit Display
- HD Wideband Audio
- 8x Programmable LED Keys
- 4-Way Navigation Key
- Dual Gigabit Ethernet Ports
- EHS/DHSG Headset Support
- PoE Class 2
- Hotdesking
- MiNet / SIP Operation Mode

MiVoice 6915 IP Phone



- Colour 3.5" QVGA Display
- 4 Context Sensitive Keys
- 6 Programmable Physical Keys
- USB Headset Support
- 1 x Type A USB Charging Port
- Power-over-Ethernet Class 2
- 2 x Gig Ethernet Ports

MiVoice M695 PKM Expansion Module



- Supported: 6920, 6930, 6940
- 28x Programmable Keys
- 4.3" Color Backlit LCD Display
- Daisy-Chain Total of 3x Modules
- All attached PKM's powered by the phone – no separate power adapter required.

6900 Series Accessories



- Bluetooth Wireless Handset (6930, 6940)
- Bluetooth USB-Dongle (6920)
- WLAN Adapter (PoE Ethernet Mitel handset)
- Integrated DECT Headset (6930, 6940)

Mitel SME to Enterprise



Mitel 6970 Conference Phone



- 7" 800x400 Colour Touch Display
- 96 Programmable Keys
- 6 Context-Sensitive Soft Keys
- PoE Power (802.3af)
- Bluetooth 4.1 Enabled
- MobileLink Feature
- One-touch Join Meeting
- 8x 360° Microphone Pickups
- Mitel Hi-Q Audio Technology
- 2 USB Ports
- Hotdesking

Mitel I12 DECT Handset & Base



- Colour, Illuminated Display
- 7x Hours Talk / 75x Hours Standby
- Wideband Audio Support (G.722) Handset, Headset & Speakerphone
- 5x Ringtones
- Up to 20 Mitel I12 DECT Phones per base
- DECT Encryption

Mitel VoWifi 5634 Handset



- Colour TFT Display
- Phonebook 1000 Entries
- 14x Ringtones Including Vibrating
- Hands-free with Duplex Loudspeaker
- Bluetooth for Headset
- Standard 3.5 mm Headset Connector
- 3 Soft Keys, 4-Way Navigation Key
- Illuminated display for incoming calls & charging

Mitel Business Console (PC)



- MVB Enterprise Attendant Management
- Dual Install Licensing for Redundancy
- MiCollab Presence, Email & Instant Messaging
- InAttend Alternative for Blind Operator
- Multi-Tenancy Management
- Barge-in Capable
- Call History on all Activity
- Microsoft Integration

Mitel I560 Operator Console (PC)



- MVO Integrated Operator Management
- Call History on all Activity
- Microsoft Outlook Integration
- Powerful Computer Telephony Integration (CTI) Tools

Hospitality Manager (PC)



- Check-in & Check-out
- Room-to-Room Communication
- Cost Control & VAT Rate
- International Call Surcharge Calculator
- Guest Name & Language
- Detailed Charge Information
- 10x Different Cleaning Statuses
- Control of Message Waiting Indicator
- Compatible with Mini Bar Codes
- Billing Services (bar, restaurant, gym, spa) to the guest's hotel bill.

Mitel Handsets & Base-Stations



712dt Entry Level 722dt Business 732d Industrial IP65



- Antimicrobial Treated
- Handset Location Tracking
- Loudspeaker
- USB-C Charging Port
- Battery (mAh)
- IP44



- Antimicrobial Treated
- Alarm Button
- Handset Location Tracking
- Loudspeaker
- USB-C Charging Port
- Battery (mAh)
- IP44



- Alarm Button
- Motion Sensors
- Handset Location Tracking
- Loudspeaker
- USB-C Charging Port
- Battery (mAh)
- IP65



- Ex Protection
- Motion Sensors
- Handset Location Tracking
- Loudspeaker
- USB-C Charging Port
- Battery (mAh)
- IP65

Mitel RFP 44 Base Mitel RFP 45 Mitel RFP 47 Base Mitel RFP 48 WiFi Base



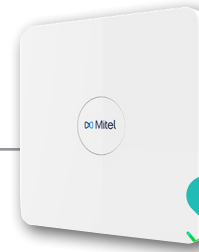
- 4x Simultaneous Voice Channels
- DECT Encryption
- Centralised DECT Open Mobility Manager
- DECT XQ Technology
- DSAA Authentication
- MTBF Rate: 40 years
- 802.3af Power-over-Ethernet (Class 2)
- Supports up to 256 RFPs & 512 Handsets / Users
- Ingress Protection: IP 20
- Adaptive Jitter Compensation
- Echo Cancellation / Suppression
- Voice Activity Detection
- Comfort Noise Generation



- 8x Simultaneous Voice Channels
- DECT Encryption
- Centralised DECT Open Mobility Manager
- DECT XQ Technology
- MTBF Rate: 40 years
- 802.3af Power-over-Ethernet (Class 2)
- Supports up to 256 RFPs & 512 Handsets / Users
- Adaptive Jitter Compensation
- Echo Cancellation / Suppression
- Voice Activity Detection
- Comfort Noise Generation



- 8x Simultaneous Voice Channels
- DECT Encryption
- 2x External Antenna Ports (directional / omni-directional)
- DECT XQ Technology
- Centralised DECT Open Mobility Manager
- MTBF Rate: 40 Years
- Supports up to 256 RFPs & 512 Handsets / Users
- Adaptive Jitter Compensation
- Echo Cancellation / Suppression
- Voice Activity Detection
- Comfort Noise Generation



- 12x Channel Base Station with support for 8x simultaneous voice channels per RFP & 4x data channels for switching purposes
- DECT Encryption
- IEEE 802.11abg/n/ac Support WiFi
- DECT XQ Technology
- Centralised DECT & WiFi Management with the Open Mobility Manager (OMM)
- Supports Over-the-Air DECT Handset Software Upgrades
- Supports Over-the-Air Synchronisation
- MIMO Support
- MTBF Rate: 40 years
- Powered via IEEE 802.3af (Class 3)

Mitel Unified Communications



Mitel MiCollab UCC Application

Mitel One UC Application

Mitel & Microsoft Teams



- Enterprise Application
- MVB Enterprise 128-bit AES Secure Encryption & Compliance
- Secure Softphone, Chat, Presence, Phonebook
- Secure Video Point-To-Point & Conferencing
- Unified User Experience between Secure Softphone Voice-Logging (CRE)
- Secure Remote Working & Mobility
- Enterprise Integration (MS Teams and alike)
- MiTeam Stream & Meetings (add-on options)



- MVO400 Feature-Rich UC Functionality
- Softphone, Chat, Presence, Phonebook
- Cost-effective remote working & Mobility
- Integration (MS Teams and alike)
- MiTeam Stream & Meetings (add-on options)



BREAKING

- Flexible Phones: desk, softphone mobile options for the same number:
- Visual Advanced Voicemail
- Real-Time, Rich Presence & Availability, Ring-Group Control
- Active-Directory Sync / SSO & Calendar Sync

Enterprise Contact Centre Integration, including :

Microsoft Teams

- Video (Personal, Room, Internal / External)
- Document Sharing and Collaboration (particularly if they are M365)
- Non-Real-Time Chat (1:1 / 1 : Many)

Microsoft Outlook

- Email
- Calendar
- Directory (Personal, Corporate)
- Calendar Sync

Mitel Contact Centre



- Customer Experience (CX) Management
- Voice, E-mail, WhatsApp, SMS & social Media Blending
- Dashboards & Reporting
- Enterprise Remote-Working Agent Operation & Management
- Enterprise REST-API Integration
- Native Connectors for CRM / ERP
- AI-Automation with Virtual-Agent Assist
- Text-to-Speech (TTS)
- Automatic-Speech-Recognition (ASR)
- IVR Call-backs & Self-Service Portal
- 999x Automatic-Call-Distribution (ACD) Queues
- Shift-Based-Working Workforce Management
- Compliance & Quality Management



VOICE

Supporting Peripheral Solutions



COMMUNICATIONS

VOICE LOGGING

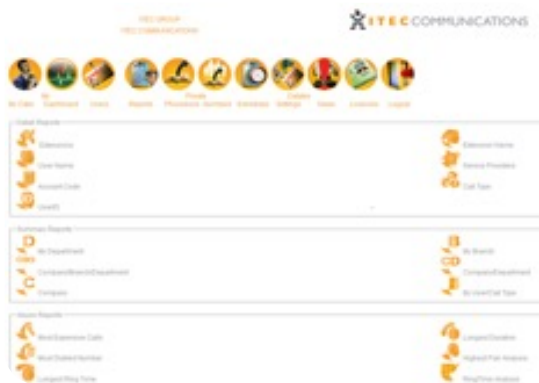


A tool required for call-centres to be compliant with legal regulations and to enhance customer service:

- Secure Encryption: 512bit AES legal compliant GDPR, POPIA, FICA, FAIS, SOX, PCI DSS, NCA & CPA)
- Extension-Side Recording
- Agent Quality Management Module (optional)
- Secure Web-Based Management Interface
- Enterprise Integration Ready



Managing Groups on...



TELEPHONE MANAGEMENT

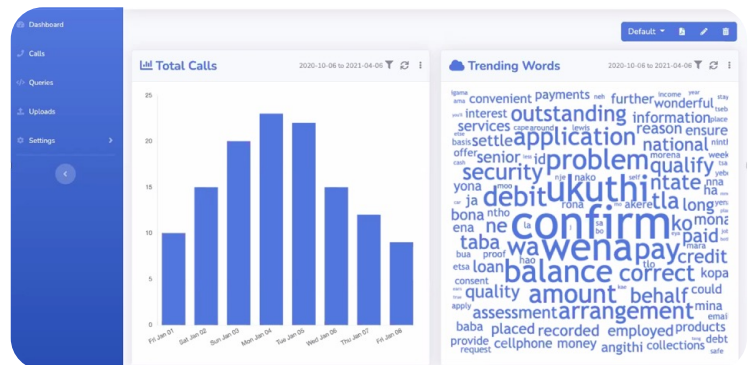
Billing & usage management for your telephone solution:

- Secure Web-Based Management-Interface
- Reporting (auto / on-demand)
- Cost Recovery
- Budget-Barring Capability
- Enterprise Telephone Management
- Tenant Billing & Reporting

SPEECH ANALYTICS

Unique to Itec, South African Language Speech Analytics:

- 4x South African Local Languages Transcriptions
- Reporting
- Dashboards
- Insights
- Word Clouds



INTELLIGENT SECURITY

Transform your operations with intelligent security.

Our advanced security solutions go beyond protection. With AI-driven technology and analytics, we elevate your security infrastructure into a powerful business management tool. From CCTV Surveillance, Access Control to Intelligent Data Analysis, we help you make informed decisions, boost productivity, and streamline processes. With our intelligent security solutions, you not only safeguard your company, employees, and customers, but also unlock the full potential of your operations.



HOW IT WORKS

During our onsite visits to assess your physical infrastructure and requirements, we prioritise your needs. We don't just focus on enhancing safety; we bring innovation and efficiency to the table, aiming to provide solutions that not only bolster security but also boost productivity, **all while ensuring adherence to industry standards.**

ELEVATE YOUR SECURITY & BUSINESS PERFORMANCE

Ensuring the safety and security of everyone and everything is paramount for every company. At Itec, we recognise the daily challenges you face in maintaining on-site security and specialise in providing tailored solutions across diverse industries.

Beyond traditional safety measures, our solutions offer

powerful business management tools driven by AI and analytics. By tracking behaviours, analysing patterns, proactively predicting incidents, and more, we empower you to make informed decisions that go beyond protecting staff, goods, and customers. From optimising operations to shaping product strategies, our advanced capabilities elevate your business performance to new heights.



CCTV
Surveillance



Access Control and
Time & Attendance



Security Software
Solutions



Visitor, Traffic &
Parking Management



Pedestrian
Access Control



Alarm Systems &
Control Rooms



CCTV Cameras

Video Recorders



Smart Eyes for Every Environment

Delivering precision, clarity, and intelligent detection, our camera range combines cutting-edge imaging technology with advanced analytics to give you total visibility and control. Whether it's a single site or a multi-location operation, our cameras adapt to your needs — ensuring crystal-clear evidence, proactive monitoring, and reliable performance around the clock.

Key Features:

- **High-Definition Imaging:** Exceptional clarity in all lighting conditions with advanced sensors and image enhancement technology.
- **AI-Powered Analytics:** Built-in intelligence enables motion detection, facial recognition, perimeter protection, and people counting.
- **Flexible Connectivity:** Supports PoE, Wi-Fi, and 4G for easy installation across diverse environments.
- **Thermal & Specialized Models:** Detect temperature changes, movement, and intrusions even in darkness or extreme weather.
- **Remote Access:** View, manage, and control footage securely from any connected device.
- **Durable & Reliable:** Weatherproof, corrosion-resistant, and designed for long-term performance.

Product Range:

- IP & Analogue Cameras
- Panoramic & PTZ Cameras
- Thermal & Special Application Cameras
- Indoor/Outdoor Wi-Fi Cameras

The Brains Behind the Surveillance

Our network and digital video recorders offer seamless integration, intelligent management, and dependable storage — turning footage into actionable insight. Designed for efficiency and scalability, they ensure your video data is always accessible, protected, and easy to manage.

Key Features:

- **High-Capacity Recording:** Capture, store, and retrieve HD and 4K footage with efficient compression.
- **Smart Search & Playback:** AI-assisted event search helps you find critical footage in seconds.
- **Seamless Integration:** Compatible with multi-brand cameras, analytics platforms, and network environments.
- **Remote Accessibility:** Monitor and manage video feeds from any internet-connected device.
- **Advanced Data Protection:** Redundant storage, smart alerts, and backup options to safeguard recordings.
- **User-Friendly Management:** Intuitive interface for real-time viewing, playback, and system control.

Product Range:

- Network Video Recorders (NVRs)
- Digital Video Recorders (DVRs)
- Hybrid Recording Solutions



Control Rooms, Analytics & Video Walls

Wireless Alarm Systems



Turning Surveillance into Intelligence

Our control room and analytics solutions transform traditional monitoring into a unified, intelligent command environment. Designed for 24/7 operation, these systems integrate live video, analytics, and operational data — giving security teams real-time situational awareness and decision-making power.

Key Features:

- **Centralised Command & Control:** Unified monitoring of multiple sites, cameras, and systems through intuitive dashboards and operator workstations.
- **Video Wall Solutions:** High-performance LED and HD display walls deliver crystal-clear, continuous monitoring across multiple feeds — ideal for operations centres and high-traffic environments.
- **AI-Driven Insights:** Advanced analytics for anomaly detection, crowd density monitoring, vehicle recognition, and behavioural analysis.
- **Real-Time Alerts & Event Management:** Automated incident notifications, smart filtering, and priority escalation.
- **Scalable Architecture:** Supports everything from small security hubs to enterprise-grade control rooms.
- **Integration-Ready:** Can be connected with access control, and building management systems for complete situational awareness.

Smart, Wireless Protection for Modern Security Needs

Our next-generation wireless alarm systems offer fast, flexible protection without the complexity of cabling. They combine elegant design with reliable performance — ensuring instant alerts, remote control, and full peace of mind.

Key Features:

- **Completely Wireless:** Quick installation with minimal disruption — ideal for retrofit or new projects.
- **Smart Detection:** Protects against intrusion, smoke, water leaks, and displacement of valuable assets.
- **Instant Alerts:** Real-time push notifications and siren activation keep users informed wherever they are.
- **Remote Management:** Arm, disarm, and monitor system activity through secure mobile or desktop platforms.
- **Scalable & Customizable:** Easily add detectors, keypads, or sirens to meet any site's security requirements.

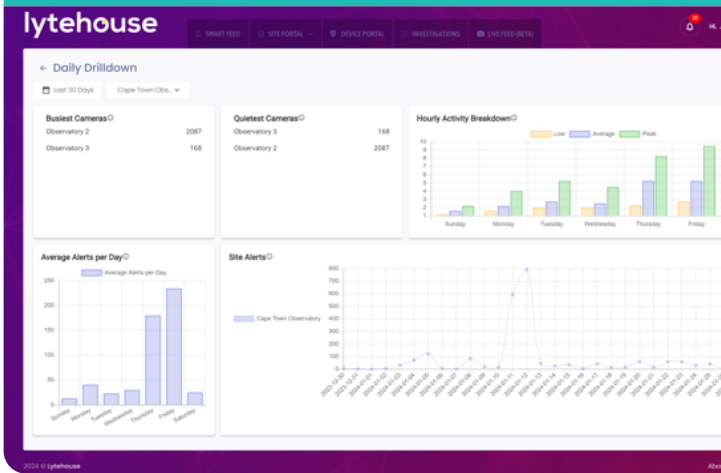


lytehouse

Video intelligence software turning CCTV streams into data-driven insights for any security need.

Lytehouse

Smarter Security From Detection To Dispatch



- Ensure that you can harness the full power of advanced analytics without being hindered by bandwidth limitations, camera brands or legacy infrastructure.
- Seamlessly integrate Lytehouse onto any site for proactive security, health and safety and operational risk mitigation.
- Create instant reports across any site, camera or control room with easy-to-digest graphics.
- In a control room environment, improve the camera-to-operator ratio by pulling the Operator Efficiency Report which enables users to track performance and make better hiring decisions to scale their business.
- 20% of cameras make up 80% of the alarms. Use our Configuration Audit to locate problem cameras generating too many or too few alerts.
- Run the Daily Drill Down reports and Alert Summaries for a bird's eye view of your detections, people/vehicle counting, and busiest hours to offer security and business value to your customers.

Various deployment methods make Lytehouse effective in any environment.



Visitor Management Solutions

Enhance site security and streamline visitor flow with an app-based system that provides real-time alerts, digital check-ins, and automated access control.

- Pre-register or invite visitors with QR/PIN codes
- Instant arrival/departure notifications
- ID and vehicle verification
- Restrict unauthorized access
- Trigger gates/barriers after approval
- Keep digital visitor records for reporting



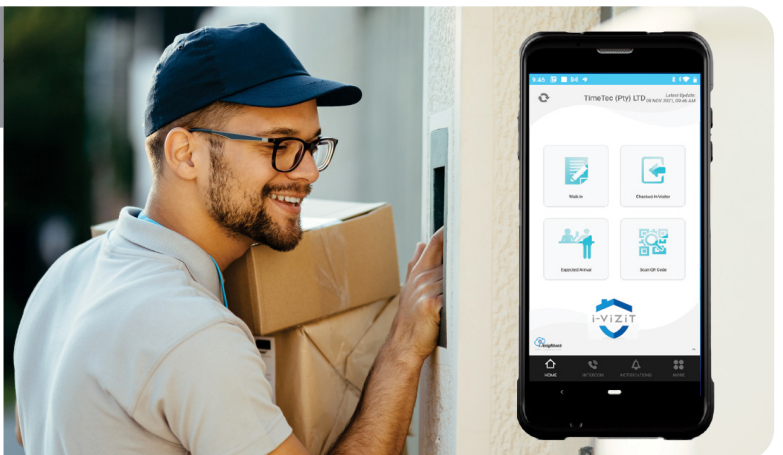
timeTec

Platform for real-time visitation records with extensive reports captured by the representative who checked visitors in or out.

timeTec

Cloud Hosted Visitor Management System

- Instant in-app notification of arrival and departure.
- Instant notification and authorisation of unannounced visitors via the platform and scanner: Pre-register or invite visitor to receive a QR or pin code.
- Restrict unwanted visitors.
- Capture and verify visitor information.
- Trigger barrier gate after successful verification.



ACCESS CONTROL



INTELLIGENT SECURITY

Smarter, Faster and More Secure Entry Management

Our access control solutions combine advanced biometric technology, intelligent software, and flexible integration to deliver fast, secure, and convenient entry management for every environment. Designed for scalability and ease of use, these systems ensure that only authorised personnel gain access — while maintaining a seamless user experience.



Product Range:

- Facial
- Fingerprint
- Palm
- Card Terminals
- Controllers, Software & Reader Interfaces

Key Features:

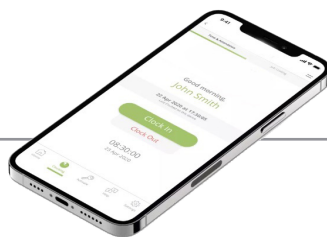
- **Multi-Biometric Authentication:** Supports facial, fingerprint, palm, and card recognition for layered security and user flexibility.
- **Touch-Free Technology:** Enables hygienic, contactless identification for high-traffic or health-sensitive areas.
- **High-Speed Verification:** Instant recognition (under 0.2 seconds) with enhanced algorithms that adapt to lighting and movement.
- **Advanced Security:** Accurate detection and anti-spoofing features prevent unauthorised access attempts.
- **Comprehensive Audit Trails:** Automatically records entry and exit data for reporting.
- **Scalable Design:** Suitable for single-door systems, enterprise sites, and integrated campus-wide installations.
- **Durable & Elegant:** Designed for continuous operation in commercial, industrial, and corporate environments.

TIME & ATTENDANCE

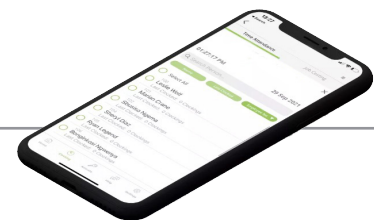
JT Manager JT Clock Myself JT Clock Team



- Automated and reliable time and attendance with access control, job costing, leave management and mobile applications.
- JT Manager is a versatile tool intended to make installation of Jarrison Time simple and convenient.
- Includes options for .net framework and Microsoft Redistributable packages.
- Can be integrated with existing payroll solutions for accurate payroll reporting



- Use your own smartphone to clock yourself wherever you are.
- Ideal for sales representatives, drivers or people working from home.
- Smart, Mobile, Geofencing and real-time clockings.
- Job costing option available, which caters for starting and stopping jobs on your own device.



- Clock the entire team using a single device.
- External biometric options available.
- Ideal for construction sites or any other work requiring a mobile team.
- Geofencing with area schedule and real-time clocking for those working out of the office.



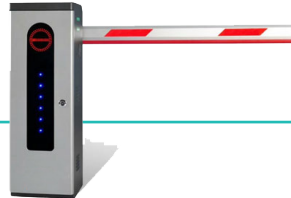
Intelligent Traffic & Parking Management Solutions

ANPR Camera



- ANPR solutions automatically capture license plates in real-time.
- Rely on big image data and well trained deep-learning models.
- High Recognition Rate of 95-98% with alphanumeric number plates.
- Fast Recognition of around 100 milliseconds.
- Cost-effective.

Bollards



- Automated & manual barriers with boom arms.
- Manual options are ideal for Ideal for road closures and supervised access control.
- Automated options are designed to handle a high volume of traffic and have a motor with battery back-up.

Product Range:

- Automated Barriers with advertising and battery backup options.
- Manual Boom & Swing Barriers
- Concertina Barrier

Barriers

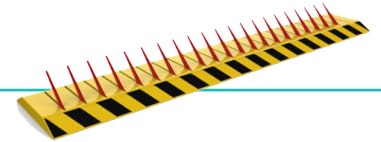


- Quality Bollards control vehicle access while ensuring there still is regular pedestrian flow.
- Static or removable options.

Product Range:

- Bollards
- Anti-Ram Posts
- Static & Removable

Spike Barriers



Product Range:

- High Security Spike Barrier – Flush Mount
- High Security Spike Barrier – Surface Mount
- Single Direction Traffic Flow Spike Barrier – Flush Mount
- Single Direction Traffic Flow Spike Barrier – Surface Mount

Pedestrian Access Control

Turnstiles



Product Range:

- Turnstile Container Conversion
- Glass Full & Half Height Turnstiles
- Industrial Mantrap Turnstile
- Industrial Full & Half Height Turnstiles
- Portable 3 Arm Waist Height Turnstiles
- Waist Height Turnstile Slimline

Speedstiles



Product Range:

- Flap Barrier
- Retractable Barrier
- Swing Barrier

Security Booths



- Locally Manufactured to International Standards.
- Only Top-Quality Graded Material & Suppliers are used.
- Extruded Anodised Aluminium.
- Dorma Pin & Bearing Adjustable Hinges for Long-Lasting Durability.

Product Range:

- Security Booths
- Mantraps

Pedestrian Access



Product Range:

- Motorised Swing Gates Round
- Motorised Swing Gates Square
- Special Need Gates

TOP-TIER PARTNERS

Transform your operations with intelligent security.

Under the umbrella of Intelligent Security, we pride ourselves on partnering with top-tier brands to deliver unparalleled security solutions. Our longstanding relationships with these vendors ensure that we provide you with the best-in-class products and services. With multiple accolades and awards under our belt, you can trust in our commitment to excellence.



Together with our trusted and reputable partners and vendors, we are dedicated to optimising your business processes and enhancing productivity for better strategic decision making and in the end contributing directly to your bottom line.

Explore our range of brand logos below to see the quality and reliability that we bring to every implementation.



CYBERSECURITY

Protect your confidential information & manage employee data access from anywhere.

Our comprehensive range of cybersecurity solutions caters to both individual users and large enterprises alike. Tailored to meet your specific requirements, we offer highly effective managed detection and response services. Leveraging cutting-edge security technologies, our solutions provide real-time threat prevention across diverse environments including networks, clouds, and data centers.



At Itec SA, we take a consultative approach to cybersecurity, aligning our solutions with industry best practices and each customer's unique governance and compliance frameworks. We support organisations across SMB, enterprise, and public sector environments with a comprehensive suite of services designed to strengthen their security posture.

OUR OFFERINGS INCLUDE

1 . VULNERABILITY ASSESSMENTS & PENETRATION TESTING

We identify and assess potential weaknesses in your environment through controlled simulation of real-world attack techniques.

Our service includes:

- Detailed reporting of vulnerabilities
- Remediation guidance
- Alignment with governance, risk, and compliance (GRC) frameworks such as ISO
- 27001, NIST, and POPIA

3 . ENDPOINT PROTECTION & XDR

We deploy advanced endpoint security solutions with integrated XDR capabilities to detect, investigate, and respond to threats across endpoints, networks, and cloud workloads.

Features include:

- AI-driven threat detection
- Real-time response and containment
- Centralised visibility and analytics

5. DMARC PROTECTION

We help secure your email domain against spoofing and phishing by implementing DMARC, SPF, and DKIM protocols.

Benefits include:

- Improved email deliverability
- Protection against impersonation
- Visibility into unauthorised email usage

2 . MANAGED FIREWALLS

We configure and manage firewalls according to industry best practices to ensure optimal protection and performance.

This includes:

- Policy tuning and rule optimisation
- Threat prevention updates
- Proactive oversight and incident response integration

4. CYBER AWARENESS TRAINING

We empower your workforce to become the first line of defence through:

- Simulated phishing campaigns
- Role-based training modules
- Continuous education aligned to threat trends

6 . MANAGED DETECTION AND RESPONSE (MDR)

Our MDR service provides 24/7 human-led threat detection and response, backed by breach warranty protection.

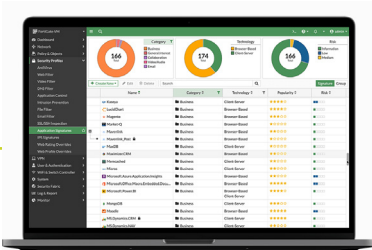
Key features:

- Continuous monitoring by security analysts
- Threat hunting and incident triage
- Rapid containment and remediation support



Comprehensive cybersecurity protection for all users, devices and applications across all network edges.

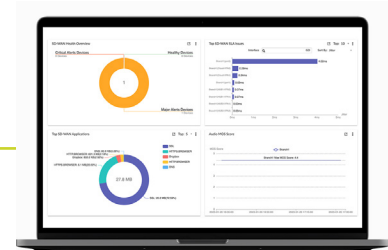
Next Generation Firewall (NGFW) Intrusion Prevention System (IPS) Secure SD-WAN



- Ultra-fast security, end-to-end.
- Consistent real-time defence with FortiGuard Services.
- Excellent user experience with security processing units.
- Operational efficiency and automated workflows.



- Network-based virtual patching for business applications that are hard to patch or can't be patched.
- Accelerated FortiGuard IPS capabilities from the purpose-built content processor (CP9).
- Extended IPS to additional capabilities like SSL inspection (including TLS 1.3) to detect hidden Malware, Ransomware, and other HTTPS-borne attacks.
- End-to-end updates for dedicated IPS administration enabling migration from separate hardware to NGFW while preserving operations and compliance practices.



- Deliver superior quality of experience at any scale.
- Accelerate network and security convergence, and simplify WAN architecture.
- Orchestrate consistent network and security policies.
- Achieve operational efficiencies through automation, deep analytics, and self-healing.

LAN Switching & Wireless Zero Trust Network Access (ZTNA)



Secure Ethernet Switches:

- Rather than asking how to secure traditional Ethernet LANs, Fortinet takes a security-driven networking approach offering Ethernet as an extension of the security infrastructure through FortiSwitch and FortiLink. Features such as NAC are included with no additional licensing.

Wireless Lan (WLAN):

- Network IT demands more capability and reliable security from fewer components to save on cost and simplify the environment. Fortinet's Wireless LAN equipment leverages Security-driven Networking to provide secure wireless access for the enterprise LAN edge.



- Fortinet ZTNA improves secure access to applications anywhere, for remote users.
- ZTNA is a capability within Zero Trust Access (ZTA) that controls access to applications. It extends the principles of ZTA to verify users and devices before every application session. ZTNA confirms that they meet the organisation's policy to access that application.





Cloud-native and AI-enhanced solutions that secure endpoints and networks against cybercriminal tactics and techniques.

Endpoint Protection



- Managed Threat Response
- Endpoint Detection & Responses
- Stop Ransomware in its Tracks
- Deep learning Neural Network
- Disk Encryption
- Intuitive
- Compliance
- Single Console

Network Protection



- Expose Hidden Risks & Stop Unknown Threats
- Isolate Infected Systems & Threat Discovery
- Secure Remote Workers
- All-In-One Protection
- Logging & Reporting
- Flexible Deployment & Easy Management
- Synchronised Connectivity
- Lightning Performance
- Instant Visibility
- Granular Controls

Cloud Protection



- Multi-Cloud Visibility
- Identify & Respond to Cloud Security Incidents
- Manage Permissions
- Optimise Costs & Improve Security

Server Protection



- Stop Advanced Malware
- Catch Evasive Threats
- Deny Hackers
- Block Server Exploits

Central Management



- Manage all your Products
- Intuitive Dashboard
- Finds Threats Faster
- Simplify Investigation
- Minimise Threat Impact

Email



- Protection from Spam & Malware
- Responds to Cyber-Threats Faster
- Compromised Mailbox Detection
- Prevents Data Loss
- Block Phishing Imposters

CLOUD

Hardware and software as a service, securely in the cloud.

We can help you to run your business applications and hardware in the cloud. Since everything in the cloud is more connected, you can securely cross-reference and share information across different applications from any device, anywhere.



Own the Information, not the Infrastructure

Cloud services have evolved from off-site data storage into a technology that gives you the applications, services and information management you need at an affordable monthly cost.

Without the hassle of costly hardware investment, the need for internal IT maintenance, and with the predictability of a set monthly payment, Itec's cloud

services remove the burden from your IT and procurement departments while keeping your systems running on cutting-edge and well-maintained technology.

Integrated into our other service offerings, our cloud systems make your processes and applications run better with technology that serves your business directly.

HOW IT WORKS

When evaluating your existing business systems and proposing an Itec solution, we consider integrating cloud-based offerings where possible for more efficient and cost-effective technology.

We can incorporate cloud-based options into our communications, document management, security and IT solutions, making your business more mobile and productive.



Choose what to own or rent with hybrid options.



Cost-effective disaster recovery and business continuity.



Enable mobile working with access-controlled technology.



Take control of your business costs.



Private, Public & Hybrid Business Cloud Solutions

Managed Cloud



- Avoid IT hardware costs / maintenance.
- Simpler, quicker and easier.
- Predictable availability.
- Always updated and upgraded.
- Back-end always functioning & available.

Private OPC

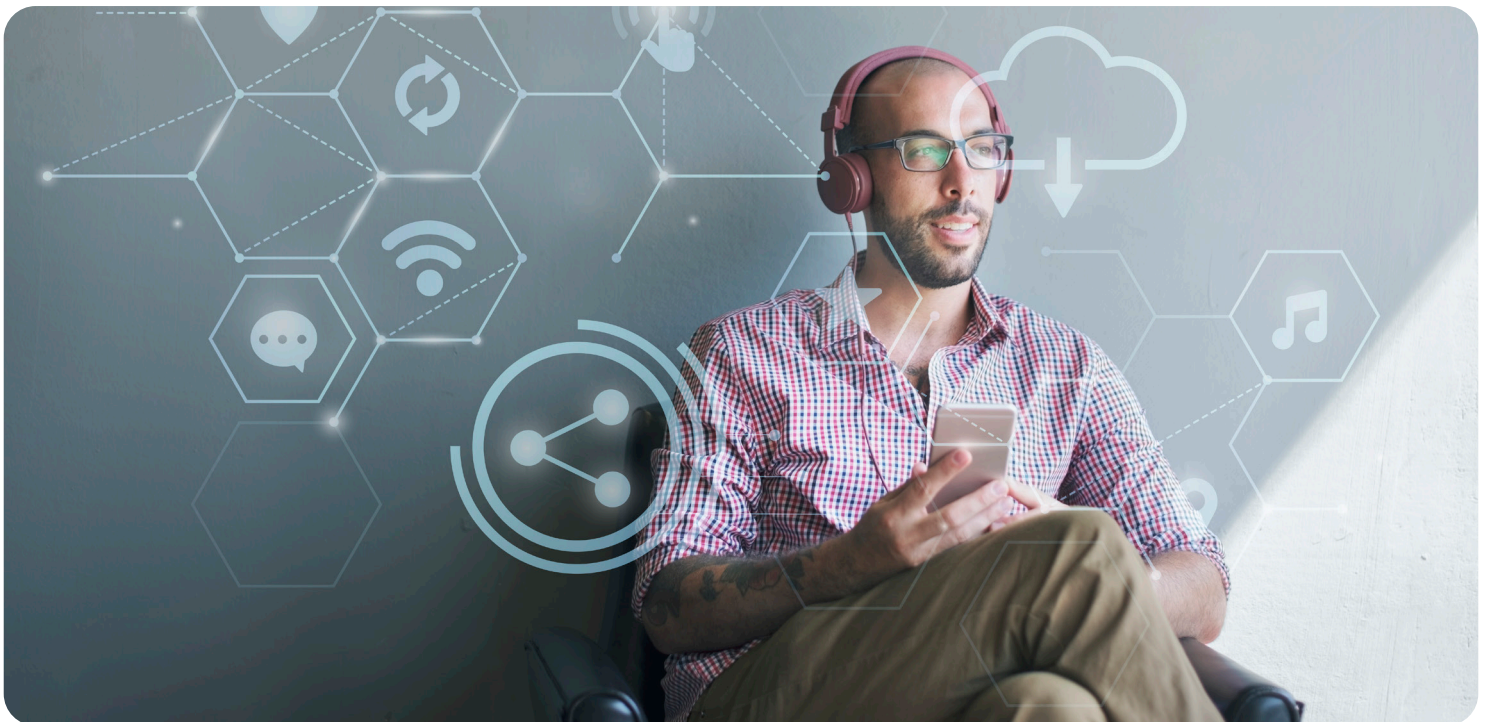


- On-premise cloud (OPC).
- Retain full control.
- Ideal for the security-conscious.
- Dedicated hardware.
- All hardware and software provided.
- On-demand payment model.
- Scale up or down on demand.
- Cloud benefits without CPX outlay.

Cloud Services



- Up or downscale and keep your business lean.
- Increase on-site storage capacity by saving backups and email archives in a secure off-site environment.
- Protection of digital assets to avoid crippling downtime or data loss.
- Automatic updates with next-generation technology.
- Reduced capital expenditure (CapEx).
- Work from anywhere, at any time, and enjoy seamless team collaboration.
- Reduce your energy consumption and carbon footprint.



PRINT SOLUTIONS



Print and store information intelligently for easy access and collaboration.

We can seamlessly integrate cloud-based digital services with your in-house ERP systems, saving a lot of time and money. You can digitise documents using your multifunction printer which enables you to transform your business with a good data management system.

Streamline your Printing Operations

Our Print Solution oversees the intelligent capturing and management of your organisation's data and information. A good data management system will transform your business, helping you find great efficiencies as you treat your data smartly.

A hybrid approach of paper and digital documentation allows for the seamless flow of information through

an organisation. Intelligent indexing and well-designed archival systems reduce costs and time searching for information, and give your employees mobile access to securely encrypted business information when they need it.

Smart document management is also essential for risk management, disaster recovery and business continuity.

HOW IT WORKS

Itec print specialists evaluate the flow of information into, through, and out of your business, with special focus on security, compliance and redundancies.

With a clear picture of your current systems, we build a strategy that gives your employees secure and quick access to information, with a risk management plan that ensures business continuity should a disaster occur.



Feed data into CRM and EPS systems.



Integrate systems data for a single truth.



Ensure data compliance with current regulations.



Automate core business functions.



A4 Mono Single Function



Up to 66 ppm

The Lexmark Mono Single Function range of devices is ideal for midsize to large workgroups offering rich features including multiple finishing options.

A4 Mono MFP



Up to 66 ppm

The A4 Mono MFP range of devices brings powerful productivity tools, cost-saving workflow solutions and a large, intuitive colour touchscreen interface for amazingly simple access to a rich range of features. This includes duplex scanning, advanced copying and easy user authorisation for enhanced security.

A4 Colour Single Function



Up to 40 ppm

The Lexmark Colour Laser Printers are machines that combine the functions of a workgroup printer with the simplicity of a personal output device. They have integrated advanced security settings and can print up to 40 pages per minute in both black and white, as well as colour. They also come with the function of duplex (2-sided) printing.

A4 Colour MFP



Up to 55 ppm

For high-quality, cost-effective colour that never slows you down, the Itec colour multifunction printer combines, standard wireless connectivity, web browser and touch-and-swipe control convenience in compact dimensions to fit any office space. Simple networking for mixed multifunction printing and desktop environments.

A3 Mono MFP



Up to 95 ppm

Offering a smart combination of features, technologies and investment for a competitive edge in business production printing. A modular system starting with entry-level hardware costs plus it features energy star awarded green technology.

A3 Colour MFP



Up to 75 ppm

The Itec A3 Colour MFP range offers high-speed output printing and scanning to help improve your productivity. It also features advanced system integration options and a built-in print system with a "touch and swipe" interface for customisable operation.

Production Printers



Up to 136 ppm Mono | 140 ppm Colour

Adds power, performance and simplicity to any production print application -- up to 136 ppm mono and 140 ppm colour print/copy output, real-time image density and colour density control sensors, and digital colour imaging to rival offset printers at a fraction of the cost.



EVOLVE. TRANSFORM. THRIVE.

Managing so much **more than print**.
Solve business problems, **not only paper jams**.

Itec MPS Transform is more than just a managed print service.

Itec MPS Transform lays the foundation with standard MPS like secure release print, proactive technical service and consumables management, and tracking and management of printed documents.

What elevates ordinary print management into Itec MPS Transform is a scalable and fully customisable solution with the power to drive down costs, empower you to take control of your business processes, and can even increase profit with analytics that drive business intelligence.



DIGITISE



Reduce dependence on print, optimise document management & streamline processes.

Efficient document management saves costs, time & resources.

INTEGRATE



Integrate digital solutions, automation & data analytics with existing systems & processes.

Automated, proactive service saves time & money, and increases uptime.

OPTIMISE



Save costs and align with business goals and objectives to increase profit, productivity, and efficiency.

Grow your business, not your infrastructure, with business intelligence.



ITEC SOFTWARE I-SUITE

Seamlessly integrate, automate, and transform your operations per department.



Introducing I-SUITE

An integrated software solution that empowers your business to work smarter, faster, and more securely. Combining document management, intelligent workflow automation, and advanced business process optimisation, I-SUITE streamlines the way you capture, store, manage, and action information.

From reducing manual tasks and ensuring regulatory compliance to enhancing collaboration and accelerating decision-making, I-SUITE helps you unlock new levels of efficiency and productivity, seamlessly integrated into your existing environment.

OUR SOLUTIONS

- Inventory Management
- ATS (Applicant Tracking System)
- Asset Management
- Signature Tool
- Document Management: HR, Legal, Procurement, Finance
- Project Management
- Human Resources
- CMMS (Computerised Maintenance Management)
- Account Management

BENEFITS OF OUR SOFTWARE SOLUTIONS



DATA SECURITY

Advanced security features, including encryption, authentication, and authorisation, to protect sensitive business information.



INCREASED ACCURACY & PRODUCTIVITY

Our software solutions enhance accuracy and productivity by automating tasks, minimising errors, and streamlining operations, delivering impactful results.



FLEXIBILITY

Designed to grow with the business, accommodating increasing data volumes, users, and transactions.



SaaS MODEL

Being cloud-based, our systems offer the advantages of accessibility from anywhere, automatic updates, and scalability, making them ideal for businesses of all sizes.



CUSTOMISABLE USER INTERFACE

Allows your business to adapt the user interface to meet your unique needs and preferences.





doc-IT

M-Files

Document Navigator



doc-IT Transforming the management, security and sharing of information. By organising and processing content based on what it is rather than where it resides.



M-Files® is a powerful, metadata-powered enterprise content management (ECM) and document management solution that solves the problems of managing, finding, and tracking information in companies of all sizes.



Document Navigator Offering intelligent document capture, processing and delivery. Itec Document Navigator provides seamless electronic workflows for paper-based documents.



DOCUMENT NAVIGATOR





PD

Reduce Print Costs & Increase Print Security with Print Director



Print Director (PD) is a powerful print management solution that can help businesses secure printers and Multi-Function Printers, reduce and allocate printing costs to departments, improve productivity, and support multiple print environments. PD is the most widely used South African-developed Print Management Software.

PD LAUNCH	PD MANAGER	PD PRO	PD CAMPUS
IDEAL FOR SME's	IDEAL FOR COMPANIES & GOVERNMENT	IDEAL FOR LAWYERS & ATTORNEYS	IDEAL FOR CAMPUS ENVIRONMENT
<ul style="list-style-type: none"> Secure Document Release Follow-Me Print Enhanced Document Security via encryption Active Directory Synchronisation Driver and Queue Management PD Capture available on v2.5.7.3 	<ul style="list-style-type: none"> Secure Document Release Follow-Me Print Enhanced Document Security via encryption Active Directory Synchronisation Driver and Queue Management Comprehensive Reports Cost Saving Rules and Routing Audit Trail PD Capture available on v2.5.7.3 	<ul style="list-style-type: none"> Secure Document Release Follow-Me Print Enhanced Document Security via encryption Active Directory Synchronisation Driver and Queue Management Comprehensive Reports Cost Saving Rules and Routing Audit Trail Print/Copy & Telephone Cost Disbursements Integrates with Legal Practice Software PD Capture available on v2.5.7.3 	<ul style="list-style-type: none"> Secure Document Release Follow-Me Print Enhanced Document Security via encryption Active Directory Synchronisation Driver and Queue Management Comprehensive Reports Cost Saving Rules and Routing Audit Trail Pay-for-Print Payment Gateway to load and manage credit Integrates with Student Access Cards PD Capture available on v2.5.7.3



FINANCIAL SERVICES

Finance your business services easily, with one contact person.

Our in-house finance solutions, offer customers flexible, affordable and accessible finance, managed by professional consultants who help to structure any deal simply, efficiently and cost effectively.



Finance to Fit Your Business

We don't believe in one-size-fits-all financing. It's why our first job is to listen. Get to know you, your business and your goals. Because your technology goals deserve a perfectly tailored solution.

Our rental finance specifically designed and available for any Itec product or service is widely regarded as the best in the industry due to its flexibility, affordability and ease of access. We provide relationship-centric, personalised service

combined with years of experience to get you exactly what you need for your business.

The technology industry is ever-changing and rapidly evolving. We continuously focus on providing your business with simple and innovative finance and rental solutions that help you achieve the most from your business investments. We are invested in creating a seamless customer experience.

HOW IT WORKS

From security to connectivity, cloud, software and unified communications, our specialists devise solutions that adapt to your rapidly changing technology requirements, allowing your business to grow and succeed with the right technology and finance solutions. Along with providing options for hardware rentals, we also offer comprehensive programs for financing and renting of software solutions.



ITEC Finance Benefits

- Customised Finance Solutions
- Flexible Rental Options
- Upfront Funding Facilities Available
- Easy-to-Complete Forms
- Electronic Contracting
- Prompt Credit Decision
- Dedicated Support Team
- Service That Delivers
- One Point of Contact
- Funding Available from Sole props, SMEs to large JSE Listed Companies
- Cash Flow Benefit - No upfront capital expenditure required
- Deferred Payment Options
- Reserve Capital for Business Growth
- Tax Deductible Rentals
- Full Comprehensive Insurance Cover Available
- Flexible Payment Terms and Structures (ranging from 12 - 60 months to align with your business requirements and or asset lifecycle)
- Preferential Upgrades with Itec

Contact Us

Let us assess your business processes and document workflow.

At Itec, we help South African companies run more efficiently by providing simple, smart, and cost-effective managed business services that help them meet their business objectives and transform their businesses for the digital age.



+27 11 236 2000 • info@itecgroup.co.za • www.itecgroup.co.za



MANAGED
BUSINESS SERVICES

