

THE IOT WORKPLACE



-  Infrastructure
-  Access & Connectivity
-  Telephony
-  Office Automation
-  Security
-  Unified Communications
-  Software Applications
-  Cloud Solutions

-  itecgroup.co.za/iot-workplace
-  Watch Video Here
-  View IoT Workplace Interior

THE IOT WORKPLACE



Infrastructure



Access & Connectivity



Telephony



Office Automation



Security



Unified Communications



Software Applications



Cloud Solutions



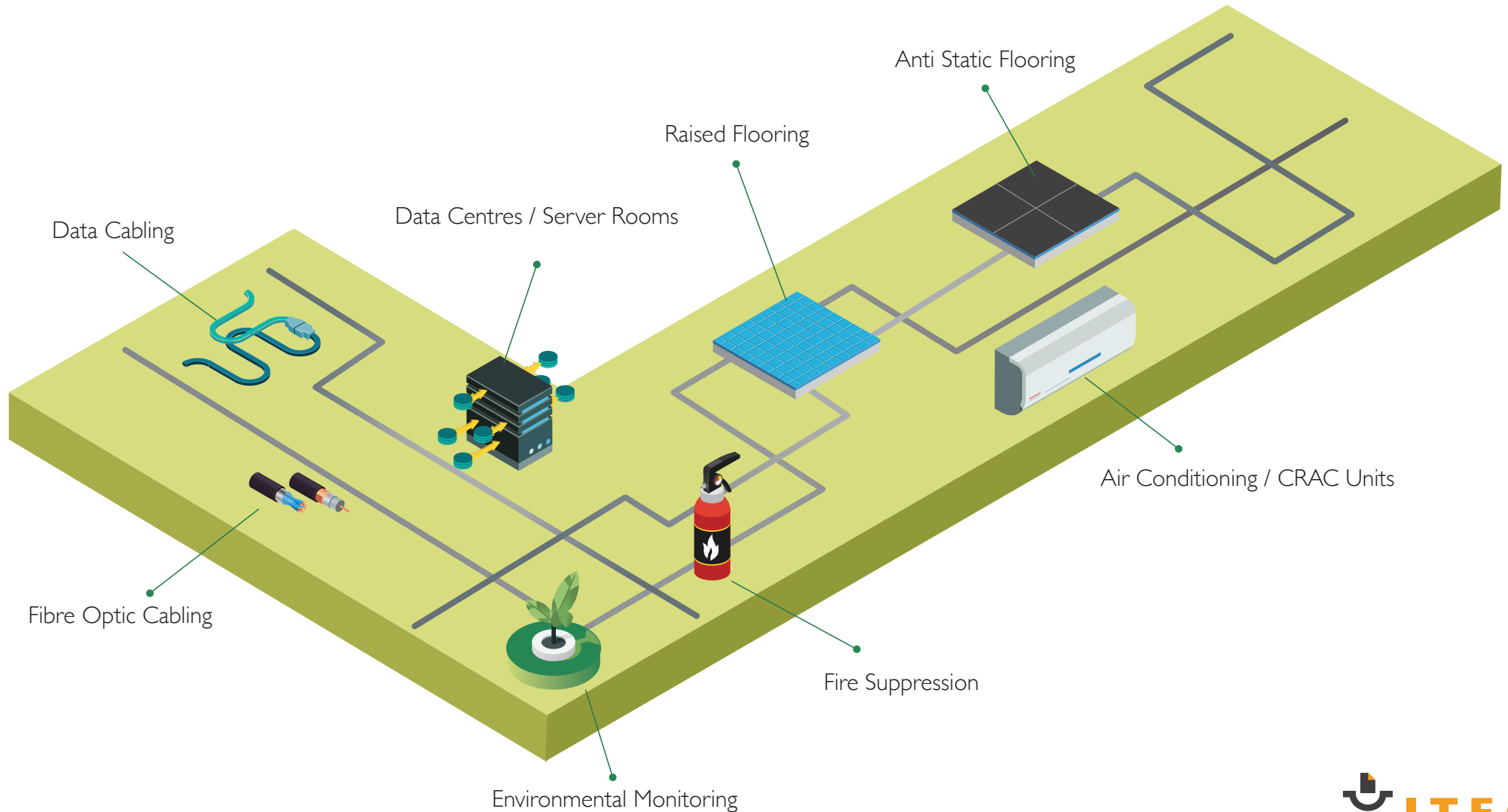
WATCH VIDEO HERE



INFRASTRUCTURE

Build the foundation for network agility and reliability

Itec provides end to end IT infrastructure with the main focus to maintain business productivity, supporting and enabling the technical operations relating to hardware, software and networking in both physical and virtual environments taking into consideration your Local Access Network (LAN) and Wireless Access Network (WAN) environments including Access and Connectivity, Telephony and all other IP based business requirements such as Managed Wi-Fi, CCTV and Access Control to name a few. We offer on-premise or cloud based firewalls to ensure real-time threat prevention and systems protection in each customer solution scope we design.





INFRASTRUCTURE

Data Cabling

Data cables are used to transmit electronic information from a source to a destination. Mostly used in computer and telecommunication systems and is either fibre optic or copper.

Data Centres / Service Rooms

A server room is a room dedicated to the continuous operation of computer services whereas a data centre is an entire building dedicated to the same purpose. These rooms are the source of a network.

Raised Flooring

A raised floor is a data centre construction model in which a higher floor is built directly above the building's original concrete floor slab, leaving the created space between the two for wiring or cooling infrastructure.

Anti Static Flooring

Anti static flooring offers protection from electrical and static shock for you and your equipment. With modern technology computer equipment have become more susceptible to static charges. We provide solutions to prevent this.

Fibre Optic Cabling

Fibre optic cables are used for different applications, for example long distance telecommunication or providing a high-speed data connection between different parts of a building.

Environmental Monitoring

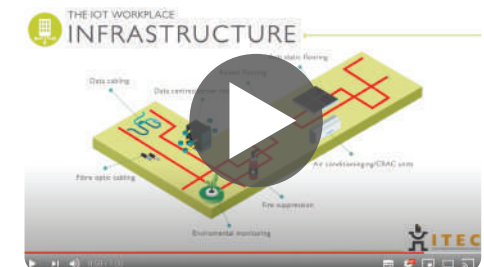
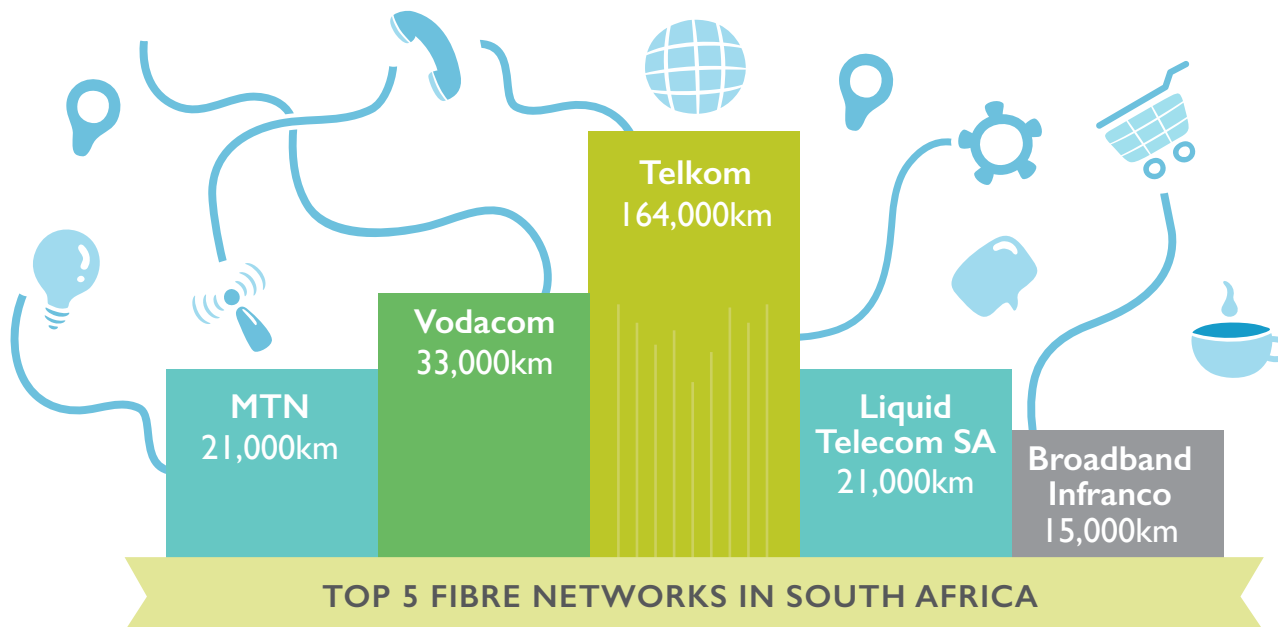
Environmental monitoring is the preparation of strategies and programs used in order to analyse and minimise the impact on the environment due to human activity therefore is a large part of networking.

Fire Suppression

Fire suppression units refer to the preparation and prevention of large-scale fire risk factors that are evident within network infrastructures. These are important systems and are vital for safety precautions.

Air Conditioning / CRAC Units

We provide air conditioning or CRAC units as part of our infrastructure solutions to interested clients. A CRAC unit is a device that monitors and maintains the temperature within a server room or data centre.



BACK

NEXT LEVEL

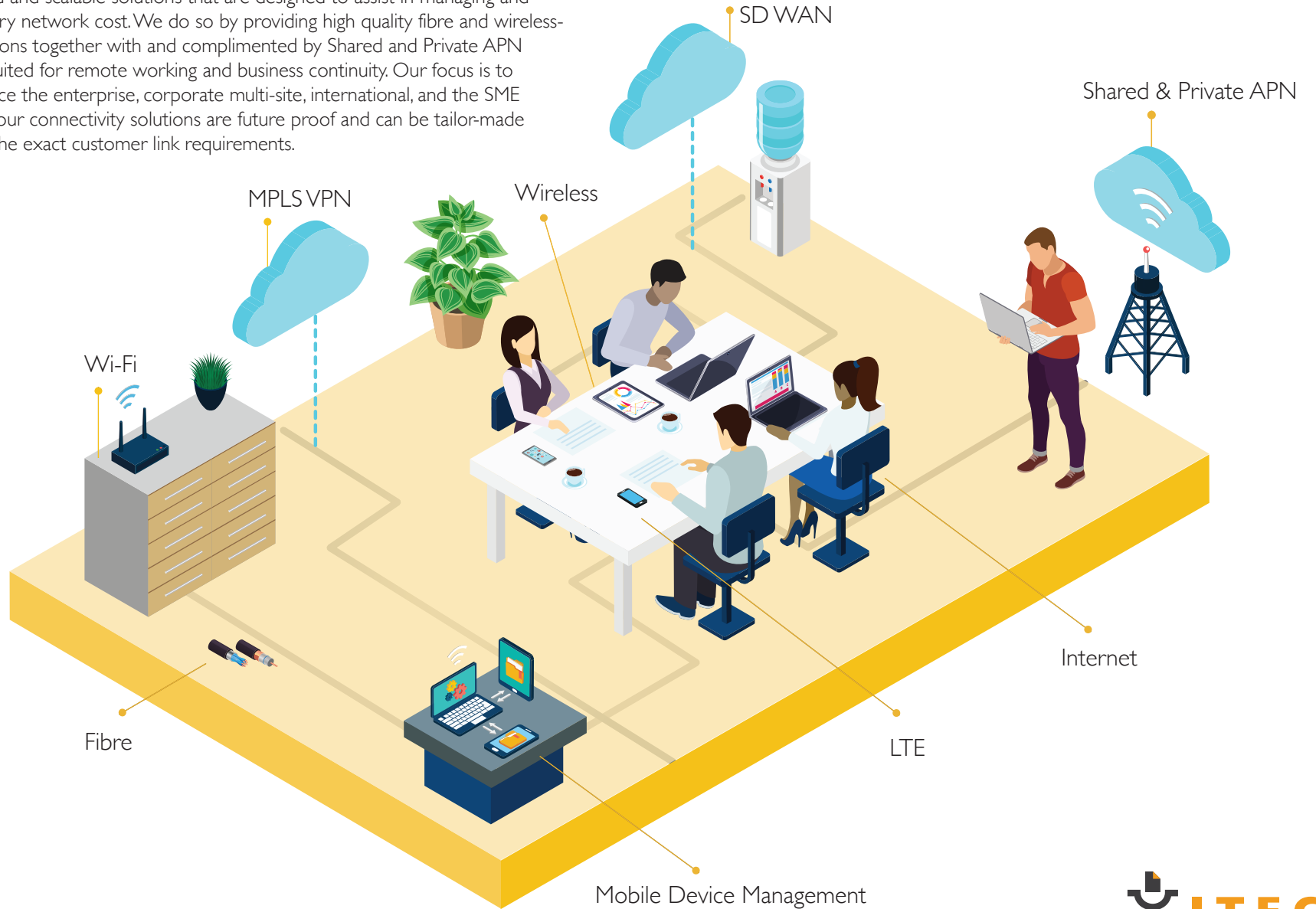
HOME



ACCESS AND CONNECTIVITY

Future proof and simplify your business connectivity requirements

As an agnostic Internet Service Provider and Tier 1 network partner, Itec is committed to deliver customised and scalable solutions that are designed to assist in managing and limiting unnecessary network cost. We do so by providing high quality fibre and wireless-connectivity solutions together with and complimented by Shared and Private APN solutions ideally suited for remote working and business continuity. Our focus is to support and service the enterprise, corporate multi-site, international, and the SME business alike. All our connectivity solutions are future proof and can be tailor-made solutions to fulfil the exact customer link requirements.





ACCESS AND CONNECTIVITY

Wi-Fi

Itec offers managed Wi-Fi, enabling a mobile workforce broadening the possibilities and efficiencies of a company. Our Wi-Fi is a perfect extension of your network. Itec will work with you to assess your solution requirements by looking at and understanding your exact connectivity requirements.

MPLS VPN

MPLS VPN is a family of methods for using multiprotocol label switching to create virtual private networks. It is a flexible method to transport and route several types of network traffic using an MPLS backbone.

Wireless

Wireless communication is the electromagnetic transfer of information between two or more points that are not connected by an electrical conductor. The most common wireless technologies use radio waves.

SD WAN

SD-WAN (software-defined networking in a wide area network) simplifies the management and operation of a WAN by decoupling the networking hardware from its control mechanism.

Shared & Private APN

A Shared APN, allows for direct access to the internet and includes a Hosted Firewall that will allow for general limitations to be set by SIM/user. The Private APN solution will allow for the allocation of a unique APN, which is a unique identifier that allows mobile devices to connect to their organisation.

Internet

The Internet is a vast network that connects computers all over the world. Through the Internet, people can share information and communicate from anywhere with a connection. Itec provides various secure, stable and reliable connectivity solutions.

LTE

LTE (Long-Term Evolution) is a standard for wireless broadband communication for mobile devices and data terminals, based on the GSM/EDGE and UMTS/HSPA technologies. It increases the capacity and speed using a different radio interface together with core network improvements.

Mobile Device Management

Itec offers mobile device management which is the administration of mobile devices, such as smartphones, tablet computers and laptops. MDM is usually implemented with the use of a third-party product that has management features for vendors of mobile devices.

Fibre

Fibre-optic Internet is an Internet connection that transfers data fully or partially via fibre optic cables. Fibre broadband is a type of high-speed broadband. The Fibre optic cables are better at transferring data than standard copper cables.

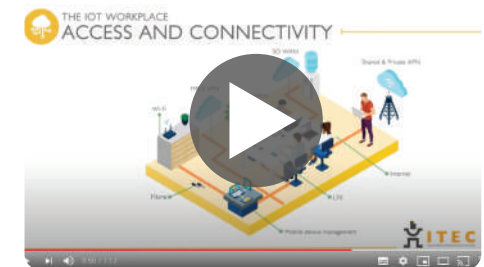
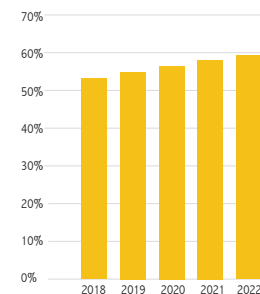
Global population of 7.74 billion people
56%
Internet penetration



Half of the worldwide population are active internet users.

SECURITY IS STILL KEY:
95% of businesses say that they want to use VPN connections to keep data private.

Internet user penetration in South Africa 2018 - 2022





TELEPHONY

The future is calling

Itec offers a comprehensive range of voice solutions, from managed, hosted, hybrid and onsite solutions that will allow your business to operate on the move, and your employees to work anywhere. We cater for contact centres, enterprise, corporate/SME multi-site and international. Your connectivity, business size, location and infrastructure requirements, will allow us to customise a voice solution that is service-based, all benefitting from competitive call rates. We understand telephony requires a real-time operational service level to ensure you always have stable, uninterrupted communications in your dynamic business.

Remote Working Applications via Softphones



MANAGED VOICE SOLUTIONS

Onsite PBX



TELEPHONY

Remote Working Applications via Softphones

Itec offers fast, reliable and secure apps for your mobile phone that you can use anywhere and anytime. This ensures easy collaboration and high productivity.

Cloud / Hosted PBX

Depending on your connectivity, business size, location and infrastructure, Itec will customise a voice solution that is service-based, reducing your investment in hardware which will provide a cloud-based or hosted PBX.

Onsite PBX

After assessing your communication needs, business challenges and existing systems we will propose either a small, medium or enterprise PABX solution. Itec also offers an onsite PBX solution.

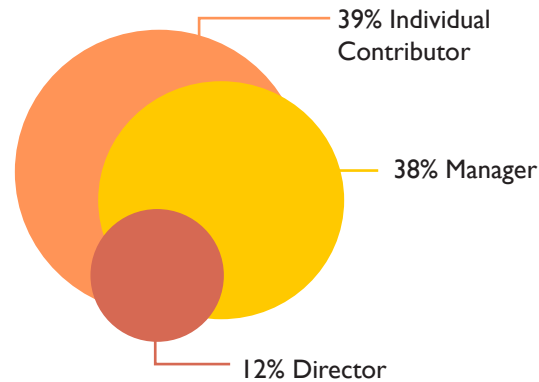
Remote work is the way of the future

44% of companies don't allow remote work

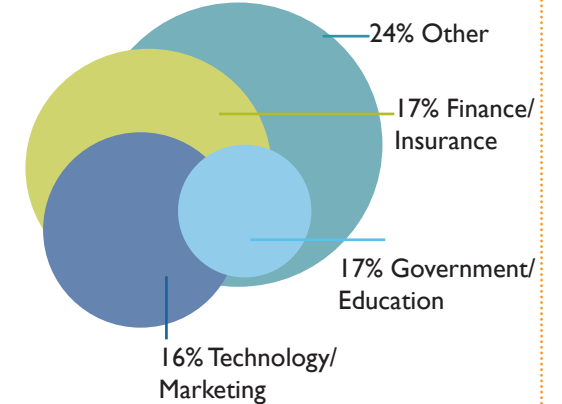
16% of companies are fully remote

AFRICA

Top 3 by Job Title/Role



Top 4 by Industry



BACK

NEXT LEVEL

HOME



THE IOT WORKPLACE

OFFICE AUTOMATION

[MORE INFORMATION](#)

[HOME](#)

Streamline your print operations

After assessing your existing print environment, we build a solution to best meet all your business needs. Upgrading and consolidating your print hardware, while considering the software and services that best enable employee mobility, data security, and efficient, streamlined document management. Our advanced software solutions integrate with your printing hardware and allows us to assess and guide your business. Itec provides quarterly reports to make business continuity as efficient and cost effective as possible. Itec is a Managed Print Service provider that strives to implement secure and efficient solutions to ensure business continuity.



OFFICE AUTOMATION

Document Management

Printer downtime is a massive headache in any office environment. An MFP that unexpectedly experiences a fault or runs out of toner can cost hours of productivity and disrupt workflow for days in a busy office. What's more, out-of-order document output devices are a massive drain on the IT department's time.

Managed Print Services

Service Management software enables Itec to remotely monitor your print fleet on your behalf, by receiving remote, automated alerts about technical printer faults, consumables levels and meter readings. This greatly reduces downtime, improves productivity and controls business environment costs.

Production Printing

Itec's Production Printing range adds power, performance and simplicity to any production print application.

Secure Print

Securely store your business information on-premises, in the cloud or both. Access it instantly from any location, with in-built security ensuring that you control data access, while still enabling compliant document sharing and integration with both your existing systems and the rest of Itec's document management products.

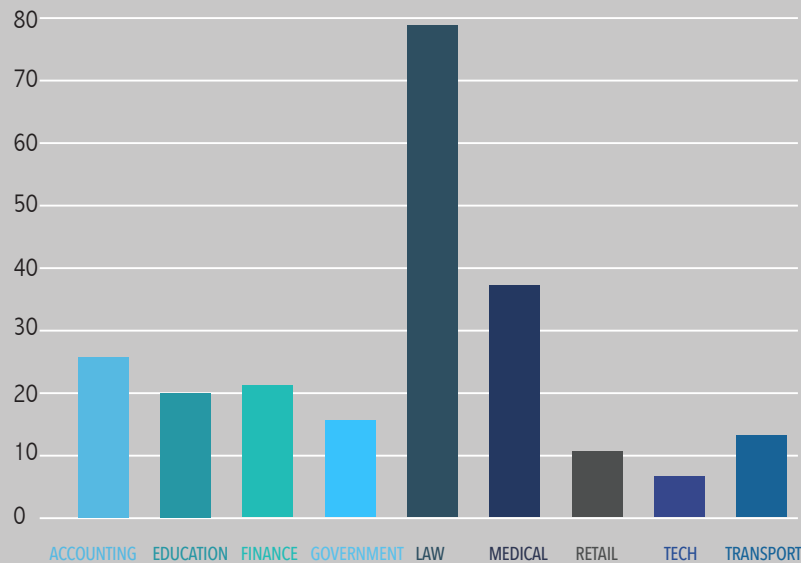
A3 Printers

The Itec A3 MFP range offers high-speed output printing and scanning to help improve your productivity. It also features advanced system integration options and a built-in print system with a "touch and swipe" interface for customisable operation.

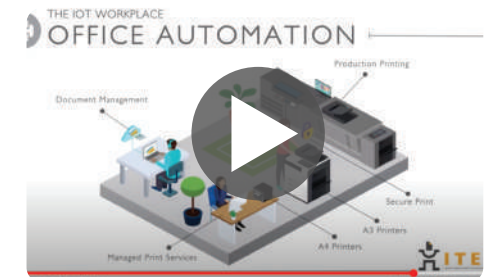
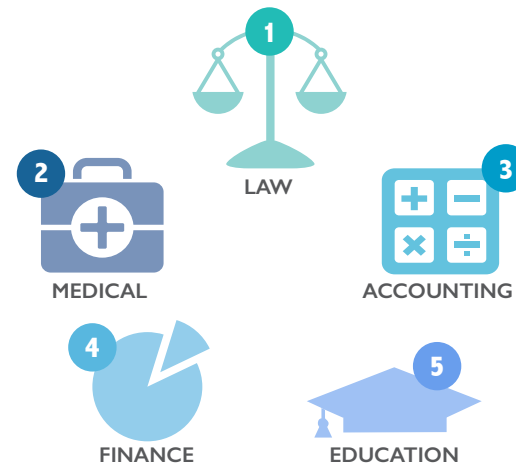
A4 Printers

The A4 printer range of devices brings powerful productivity tools, cost-saving workflow solutions and a large, intuitive colour touchscreen interface for amazingly simple access to a rich range of features. This includes duplex scanning, advanced copying and easy user authorisation for enhanced security.

Average daily pages printed per user by industry



TOP PRINTING INDUSTRIES





THE IOT WORKPLACE SECURITY

[MORE INFORMATION](#)

[HOME](#)

Your safety is our priority

Security is about: Who should or shouldn't have access to your company premises. Who should or shouldn't see or share your organisation's information. Helping you protect your property, people, assets and information with our innovative security solutions.

We can integrate security solutions into every part of your business enabling you to be more prepared for business continuity, to be more aware of your employee activities and make informed decisions based on intelligent analytics. Our intelligent systems cater to all sizes of business from small to large enterprises. Connect with a trusted partner like Itec, and hone your security culture while leaving the heavy lifting to us.





SECURITY

CCTV Surveillance

Itec can design a CCTV solution that meets all your security needs. With clear and reliable video proof, your business will be safe from any false liability queries and you will be able to make decisions based on objective evidence. Our systems include digital auto-tracking, multi-browser and device support, built-in motion, audio and face detection, remote focus adjustment, a variety of video viewing streams and a clear view of vertical areas.

Electric Fencing

Secure your premises and the safety of your employees by putting up extra barriers to keep everybody safe.

Alarm Systems

Itec offers a range of different alarm systems to ensure your utmost safety continues within your walls.

Boom Gate / Gate Motors

To manage and keep control of who is coming in and out of your premises, Itec offers boom gates and gate motors for you to easily keep track of entries and exits.

Access Control

At Itec we offer a variety of Access Control Solutions, such as:

- Biometric Access Control
- Facial Recognition Solutions
- Time and Attendance Devices
- Smart Lock Solutions
- Turnstiles

Facial Recognition

Facial recognition is a way of recognising a human face through technology. A facial recognition system uses biometrics to map facial features from a photograph or video. It compares the information with a database of known faces to find a match.

Steel & Glass Turnstiles

Turnstiles are compact and cost-effective entrance solutions. Designed for smooth and silent operation, reducing power consumption, wear and tear. It is suitable for areas with high traffic.

Thermal Solutions

Itec offers Thermal Solutions which range from surface temperature to core temperature which achieve rapid and safe screening procedures. These thermal solutions combine AI detection and advanced algorithms in order to measure accurate temperature.

Visitor & Parking Management

Efficiently manage your parking area. Know who is coming and going out of your premises at any given time. Itec will ensure that all captured data will be saved securely in case you ever have to access it.

19th century, Bertillon was the first one

to use specific anatomical characteristics for the identification of re-offending criminals.



The concept of biometrics started **31,000 years ago**

21%

Only 1 in 5 organisations offer monthly awareness training to employees.

51%

of organisations have suffered from ransomware attack

On average, organisations experience 3 days of downtime as a result.

85%

believe the volume of web or email spoofing will remain flat or increase.



BACK

NEXT LEVEL

HOME



THE IOT WORKPLACE

UNIFIED COMMUNICATIONS

[MORE INFORMATION](#)

[HOME](#)

Get your message across from anywhere, on a single number

Businesses today demand UC to offer a single point of access to voice, chat, and video capabilities, you need to seamlessly collaborate with anyone and at any time. Remote workers need a business solution that allows them to be productive and get work done, regardless of their location. Digital transformation made presence, softphone, video and integration to ERP/CRM a norm, not an exception any longer. With this securely encrypted, cloud based system, you won't need to worry about high infrastructure investments or keeping up with the latest technology. Itec provides these solutions in a flexible subscription model.





UNIFIED COMMUNICATIONS

Contact Centre

Itec offers a contact centre to all their customers which is a central point from which all customer contacts are managed. Through the contact centre, we are able to route the correct information to the relevant people.

Instant Messaging

Itec's unified communications offer Instant Messaging (IM) – IM is an online instant chat that offers a real-time text transmission over the internet.

Remote Working

Itec's solutions and products allow professionals to work outside of a traditional office environment and still be able to continue business as normal via applications and cloud-based solutions. For example, you can run an app on your mobile phone so that it acts as your direct desk phone. You are able to work from anywhere at anytime and access all the relevant documents and content you need to continue your normal day to day job.

Video & Voice Conferencing

Itec offers cloud-based video conferencing services and collaboration tools that create real value for your business. Whether it's one-to-one video calls, small online meetings, large web conference capabilities or chats between teams. These solutions are designed to enhance productivity and provide seamless collaborations.

Companies want all-in-one environments

68% of UC buyers say **all-inclusive capabilities** are crucial to their purchasing.



UCaaS strengthens various business operations

72% Improved Productivity.
91% Better Collaboration.
88% Faster Problem Solving.

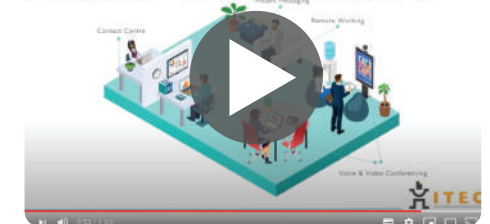


Connected communications strengthen productivity

Over 75% of UCaaS users experience heightened productivity levels.



THE IOT WORKPLACE UNIFIED COMMUNICATIONS





SOFTWARE APPLICATIONS

Access information wherever, whenever, on any device

There are great efficiencies to be found if you treat your data smartly. Good data management is also core to backups, disaster recovery and business continuity. Don't forget about regulations, compliance and security: all of these can be met with a good data strategy, making your business run smarter and faster. IOT technologies bring automation and accuracy to critical business processes. When applied to common mundane tasks, then controlled and managed professionally, results can be seen from improved streamlined processes to drastic cost savings.





SOFTWARE APPLICATIONS

Pre-Sales Auditing

Itec offers software to manage your print services, audits and costs. This software is an online printer administration designed to make life easier when it comes to managed print services/printer management.

Cost Management

Itec offers solutions that manage printer and copy usage. This software has all the features to help you easily optimise printer access and track printer and copy usage throughout your organisation. An excellent reporting system makes internal billing a breeze.

Service Management

Itec offers a Service Management tool, which is an online health and status monitoring solution that reduces the need for user intervention and boosts system uptime by automating a number of key processes and tasks for your print fleet.

Content Management

Itec offers a Document Management system that integrates with printers and MFPs to enable the intelligent capturing and managing of an organisation's data. It enables existing mobile devices and multifunction printers to feed all data sources into a central intelligence bank, including integration with ERP and CRM systems, to create a single view of customer and business information that is compliant and safe.

Document Capture

Offering intelligent document capture, processing and delivery, Itec has a document navigator that provides seamless electronic workflows for paper-based documents. This simple and flexible capture solution manages document-based processes easily and with absolute reliability, letting office workers concentrate on the essentials of their business.

Office Productivity

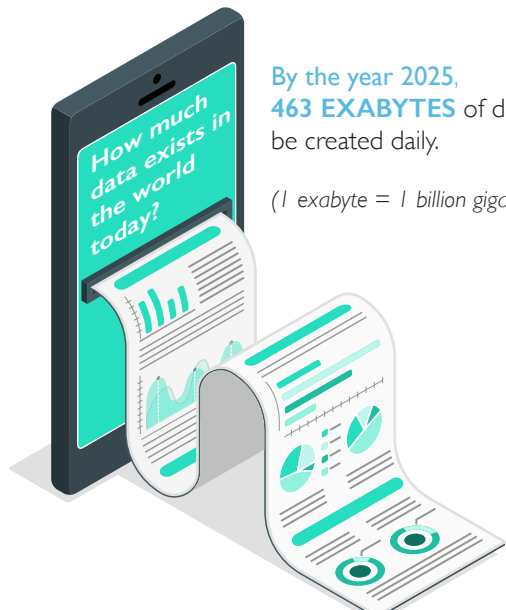
Microsoft 365 is cloud-based productivity, hosted by Microsoft. At its heart is Office itself - the familiar, rich Office applications customers use and love - now offered as a cloud service, so it's always up to date. But Microsoft 365 is also so much more. It's about bringing enterprise-grade services to organisations of all sizes, from online meetings to sharing documents to business-class email.

Software License Management

- License Assessment
- License Acquisition
- License Management
- License Recovery and Recirculation
- Rapid Acquisition Cycle
- Full Insights and Analytics

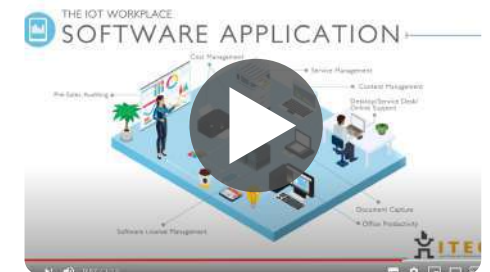
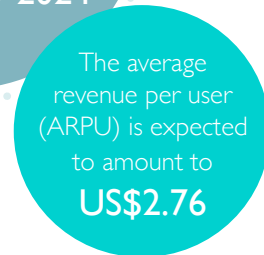
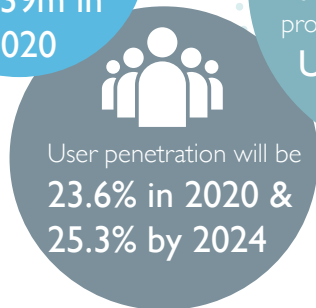
Remote Desktop/ Service Desk/ Online Support

Itec offers full infrastructure management through a dedicated Operations Control Centre. Outsourced end-user support desk with remote access to any location. Onsite personnel in scheduled health-checks and visits. Onsite personnel dedicated full-time (as required).



By the year 2025, **463 EXABYTES** of data will be created daily.

(1 exabyte = 1 billion gigabytes)





THE IOT WORKPLACE

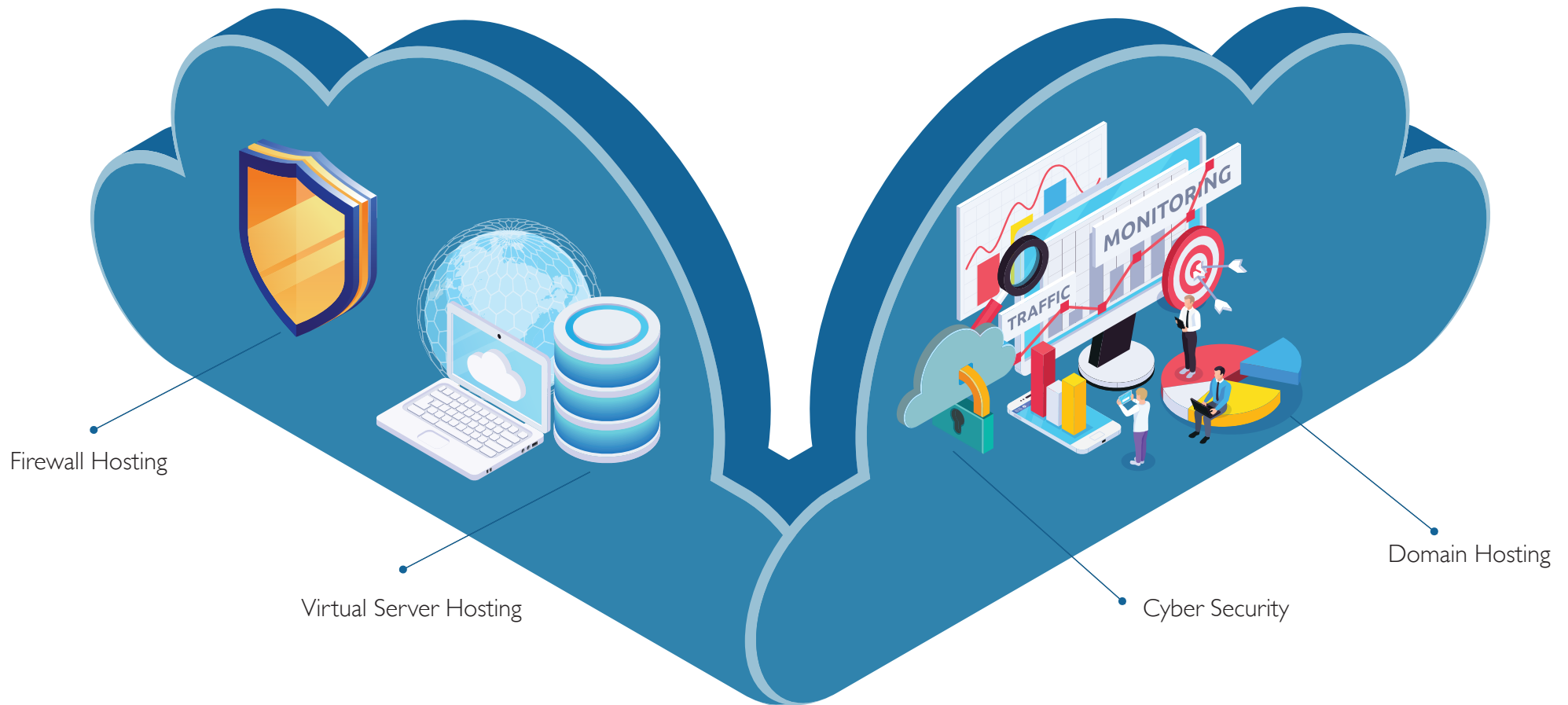
CLOUD SOLUTIONS

[MORE INFORMATION](#)

[HOME](#)

Own the information, not the infrastructure

More than simply hosting your data somewhere else, 'The Cloud' gives you the applications, services and data you need, on the technology you desire, without spending huge amounts of money. If you just want a single service or to migrate your entire IT setup, you have the flexibility of choice and a lot of room to expand. Itec offer solutions by architecting, designing, and building bespoke solutions based on your business' specific cloud hosting requirements. Our range include, Data Centre, Computing (Virtualization, Private Cloud), Networking (LAN, Perimeter Security), Storage (SAN, DAS & NAS), Backup & Recovery, Disaster Recovery, Session Border Controllers (SBC) and Infrastructure Monitoring.



CLOUD SOLUTIONS

94% of SMB's have found security benefits in the cloud that they didn't receive in their on-premise service.

Within the next **5 years**, the public cloud will experience a **44% growth**.



SOUTH AFRICA IS ONE OF THE FASTEST GROWING COUNTRIES

globally for IT spend = 3.9% in 2019 and 4.2% forecasted in 2020



Cloud computing is a new reality in South Africa = 11.4% Increase in 2019

SA cloud market worth = \$2,3 billion by 2020

Remote Working Applications via Softphones

Itec offers fast, reliable and secure apps for your mobile phone that you can use anywhere and anytime.

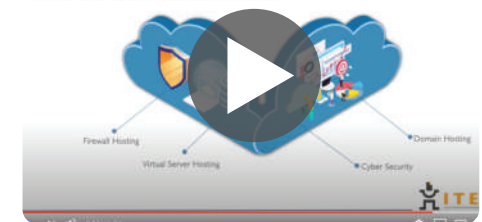
Cloud / Hosted PBX

Depending on your connectivity, business size, location and infrastructure, Itec will customise a voice solution that is service-based, reducing your investment in hardware which will make this PBX Cloud based/ hosted.

Onsite PBX

After assessing your communication needs, business challenges and existing systems we will propose either a small, medium or enterprise PABX solution. Itec also offers an onsite PBX solution.

THE IOT WORKPLACE CLOUD SOLUTIONS





+27 11 236 2000 • info@itecgroup.co.za • www.itecgroup.co.za

 itecgroup.co.za/iot-workplace

 Watch Video Here

 View IoT Workplace Interior

Communications



Security



Cloud



Document
Management



Mobility



Finance

