

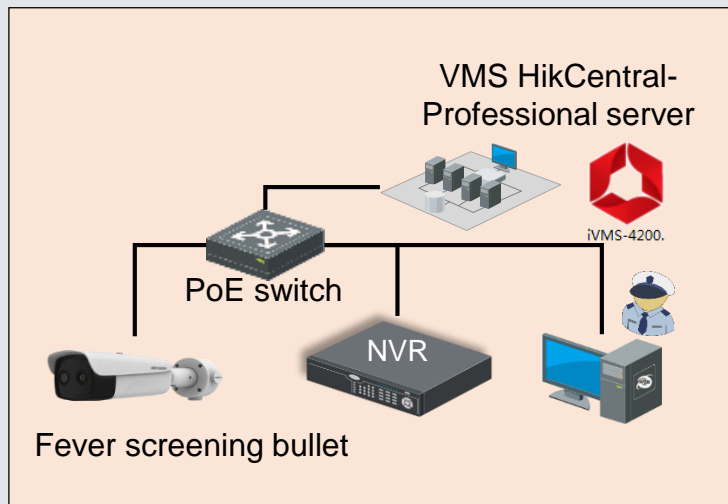
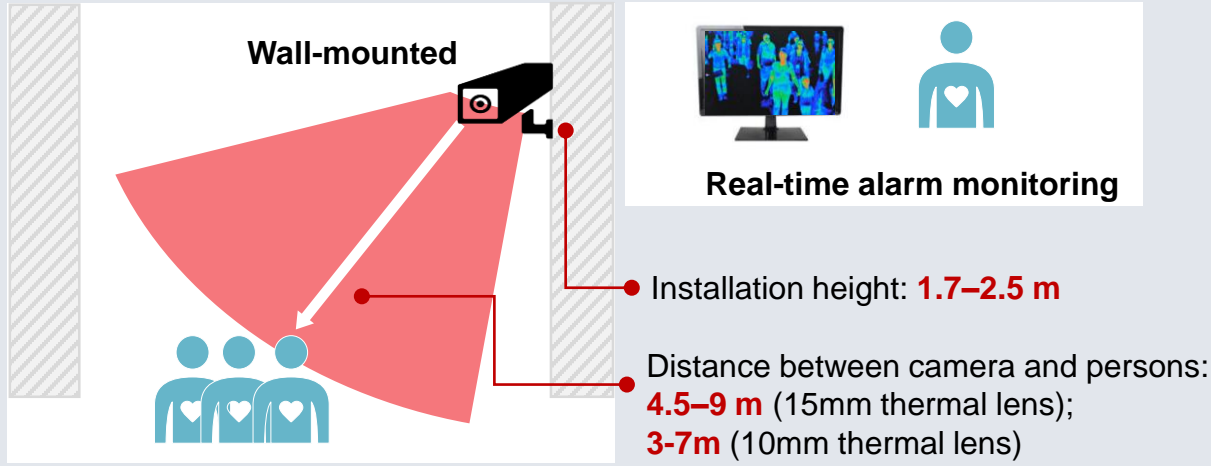


# Recommended Temperature Screening Solutions

## 1 Fixed Long-range Temperature Screening

Covering wide open areas

### Solution Details

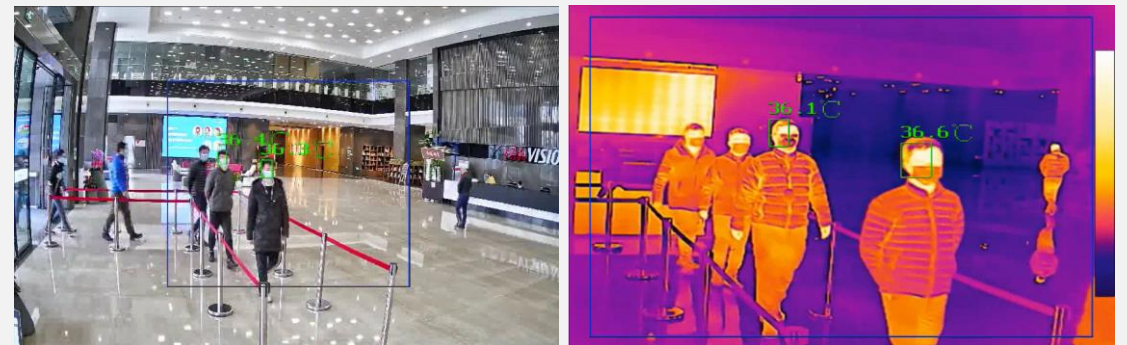


### Product Information

- Thermal: 384 × 288, lens: 10/15 mm
- Optical: 2688 × 1520, lens: 4/6 mm
- Simultaneous fever screening for **multiple persons (up to 30 persons)**
- **Accuracy: ±0.5°C**
- Measurement range: 30-45°C
- Working temperature: 10-35°C
- **AI human body detection** reduce the false alarms of fever screening
- Higher resolution, **more image detail**, **longer measurement range**



DS-2TD2636B-15/P  
DS-2TD2637B-10/P

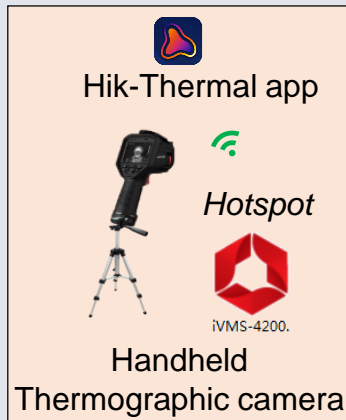


## 2 Handheld Patrolling Temperature Screening

Covering small spaces & places not convenient to set up fixed device

### Solution Details

- For preliminary temperature screening by spot-checking inspectors (**indoor**)
- Temperature screening without disturbing people

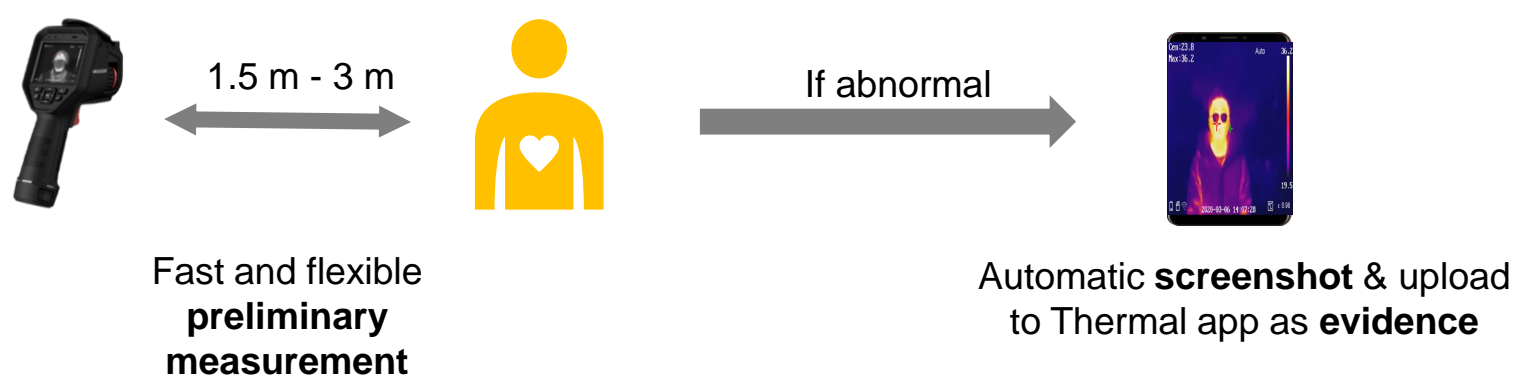


### Product Information

- Thermal resolution: 160 × 120;
- Optical resolution: Max 8 MP;
- **Accuracy: ±0.5°C**
- Measurement range: 30-45°C
- 3.5" LCD touch screen
- Supports **Wi-Fi hotspot**, automatic screenshots of a person with a fever & uploading to the Mobile Client (Hik-Thermal) as evidence
- Supports real-time **audio alarm**



DS-2TP21B-6AVF



## Application Scenarios

### Hospital



The **nurse station or information desk** is the place where the potential patients will consult and gather. So the fast preliminary temperature screening is quite needed here.

### Airport Transport Station



The **passenger channels** at the airport or other transport stations are the important locations where passengers arrive and need the fast preliminary temperature screening.

### School



**Corridors of schools** are the regular areas where most of the students pass through. This location can be a daily internal screening point.